




# Thunder




## Product Data Sheet

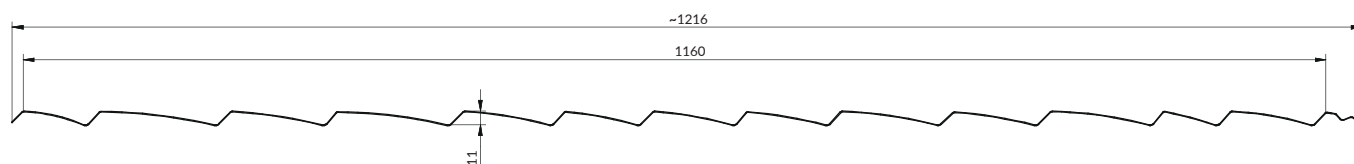
 General information


THUNDER is Blachotrapez's answer to the needs of all clients, who are looking for the roof covering characterised by unique aesthetics and timelessness combined with stone durability. In order to meet the modern trends, THUNDER is manufactured in onyx colour and with stamping, which ideally imitates a traditional wooden shingle.

 Technical details

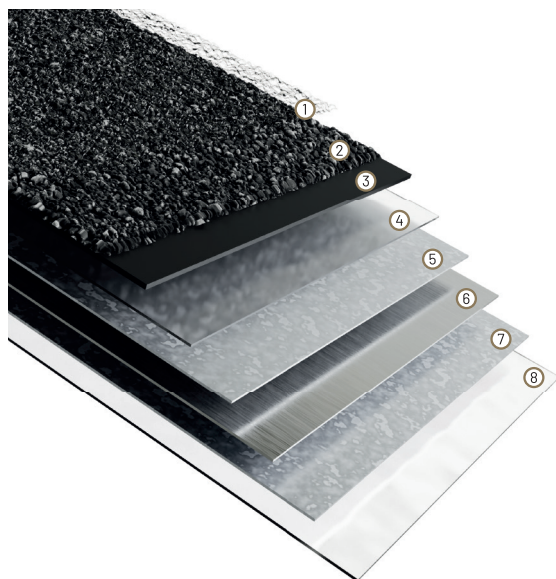
Total width:	~1216 mm	Profile depth:	11 mm
Actual coverage width:	1160 mm	Step length -Module:	380 mm
Steel thickness + AZ:	0,44 mm	Sheet length:	430 mm
Roofing tile offset step height:	38 mm	Number of modules per m <sup>2</sup> :	~2.27 pcs./m <sup>2</sup> of effective coverage
Sheet weight:	~ 3 kg		

 Thunder - dimensions, longitudinal section.



 Advantages and properties

THUNDER is a combination of steel and rock aggregate coating. Shows exceptional resistance to deformations caused by hail impact. An additional advantage is a fact that the rock aggregate coating dampens the sound of rain very well, which will be particularly appreciated by owners of a residential use loft. Thunder is distinguished by its high offset step of the tile, which gives it a distinctive shape.



## STRUCTURE OF BTR SYSTEMS TYPE SPRINKLED STEEL SHEET COATINGS

- |                                |                                |
|--------------------------------|--------------------------------|
| ① Clear acrylic coat           | ⑤ Aluzinc protective layer     |
| ② Natural rock aggregate       | ⑥ Steel core                   |
| ③ Base layer                   | ⑦ Aluzinc protective layer     |
| ④ Protective passivation layer | ⑧ Protective passivation layer |



### Intended use

Thunder supplied in the form of ready made elements, is used as covering for roofs with a pitch of not less than 14°. These metal sheets are used as finishing and securing elements in buildings. Thunder can also be installed as a façade finish. Shingle-like metal sheets should be used in accordance with technical designs of buildings, manufacturer's mounting instructions and recommendations, applicable standards, and building regulations. Our product has a long 60 year warranty (see separate warranty print on our website, [www.btrsystems.eu](http://www.btrsystems.eu)).



### Test results/Documentation

Thunder holds a Declaration of Performance drawn up on the basis of applicable Standards and Regulations for construction products.

This document is issued for the completed order (please contact the Quality Control Department the procedure diagram is given on our website, [www.btrsystems.eu](http://www.btrsystems.eu)).



### Additional information

We also have properly prepared instructions for transport, storage, cutting, and maintenance of the metal sheet with the coating. In order to familiarise yourself with its content, visit our website [www.btrsystems.eu](http://www.btrsystems.eu) or contact our Sales Representatives or company branches, whose addresses can also be found on our website.

