



## PRODUCT CATALOGUE

[WWW.BLACHOTRAPEZ.EU](http://WWW.BLACHOTRAPEZ.EU)





Innovation. Highest quality of products. Creating new utility models. These are key aspects of development of BLACHOTRAPEZ. These are also values, which determine the rhythm of everyday work of our specialists. As the leader in the production of roof and facade coverings in Poland, the company with 55-year experience, we guarantee the greatest care of production process. Our experts ensure that the work is perfect from design stage, through the selection of materials and colours, production to the installation.

The covering materials by BLACHOTRAPEZ mean precision in every detail and the highest quality confirmed by written warranty for even 60 years. The reputation of BLACHOTRAPEZ's products is also supported by the quality of raw materials - the company only cooperates with the best suppliers and is a general distributor of the highest quality coverings from the steel mill thyssenkrupp.

We do all this in order to fulfil the dreams about ideal house with you. The house covered by beautiful, rigid roof, which provides safety and comfort for the whole family.

<b>COMPANY</b>	<b>03</b>
<b>ROOF TILES</b>	<b>05</b>
KUGA, KUGA LINE	06
TREND	08
ESTIMA	10
ENIGMA	12
GERMANIA	14
GERMAN	16
TALIA	18
DIAMENT	20
KINGAS ECO Plus	22
JANOSIK	24
<b>SNAP LOCK ROOFING PANELS</b>	<b>26</b>
Terrano	28
T-Panel	30
High-Tech	32
Retro 25	34
<b>TROUGHED METAL SHEETS</b>	<b>37</b>
T-7/T-7 PRO, T-14+	38
T-18	39
T-18+	40
T-20+	41
T-35+	42
T-50	43
<b>COLOURS</b>	<b>44</b>
<b>INPUT MATERIAL</b>	<b>46</b>
<b>INNOVATIONS</b>	<b>52</b>
<b>DEDICATED FITTINGS</b>	<b>53</b>
<b>TRANSPORT</b>	<b>54</b>



# ROOF TILES

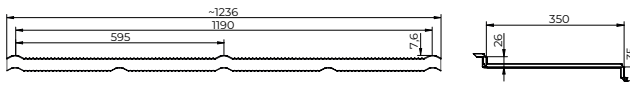
## LIGHT ROOF COVERAGE

Metal roofing tiles are the universal roof coverage, which can be easily applied in various types of architecture. Metal tiles are eagerly chosen by investors, both in new building and renovations. The light weight of metal roofing tile is their particular advantage. 1 sq m of sheet weighs approx 4kg, that is almost 10 times less than traditional ceramic roof tiles. The light coverage neither burden nor affect the structure of the entire building

Thus, the roof sheets are the most frequently applied solution in residential, sacral, farm and public utility buildings. Designed as classic roof tiles, the products from our portfolio, such as GERMANIA SIMETRIC, GERMAN SIMETRIC, DIAMENT, KINGAS, TALIA, ENIGMA, ESTIMA, KUGA, KUGA LINE and JANOSIK combine tradition with modernity.

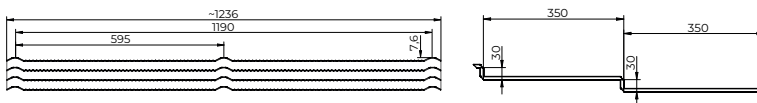
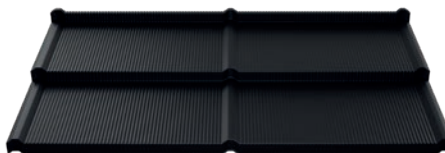
The fully automated production process allows for cutting sheets to the required length and therefore the delivery of most unusual orders, accompanied by a reduction of waste.

We offer roof sheets in over ten colours, coated with polyester, PLADUR® EcoProtect thyssenkrupp. The highest quality of coverage is ensured by complete systems of finishing elements, processing, flat sheets, seals and fixing accessories.



**TECHNICAL PARAMETERS**

	kuga.line	kuga
Width overall	~1236 mm	~1236 mm
Effective covering width	1190 mm	1190 mm
Finished product thickness (steel)	0,5 mm	0,5 mm
Finished product thickness (aluminium)	0,6 mm	0,6 mm
Step length (module)	350 mm	350 mm
Step height (offset)	30 mm	35 mm
Profile depth	7,6 mm	7,6 mm
Wave length	595 mm	595 mm
Sheet length	725 mm	385 mm



scan QR code and see the 3D model - Kuga



scan QR code and see the 3D model - Kuga line

**NEW**

**Available in the following coats:**



Pladur®  
Wrinkle Mat



Pladur®  
Wrinkle Mat Plus



Aluminium  
MAT Corase

**DISTINCT FORM, TIMELESS STYLE**

Kuga is a single-module metal roofing tile with a segmented shape and reinforced nanowave, ensuring a consistent pattern and significantly improving product life and resistance to deformation. The shape of Kuga tiles also facilitates condensate evacuation when installed in a staggered half-bond pattern. Local ventilation helps to keep the roofing dry, which is critical to long service life.

**KUGA LINE - BEAUTY IN A STRAIGHT LINE**

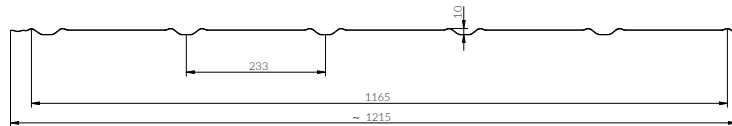
Kuga line is a new generation of flat metal roofing tiles with sharp geometric features and a unique shape. The linear installation also contributes to the perfect appearance of the roof, and the precise line and uniform pattern help to create a single, harmonious whole. Additionally, the reinforced nanowave significantly improves the technical specifications of the product. Kuga line is available in a double-module version.





**TECHNICAL PARAMETERS**

Overall width	~1215 mm
Effective coverage width	1165 mm
Thickness of the finished product (steel)	0,5 mm
Tile rib height	30 mm
Module length	350 mm
Profile height	10 mm
Wavelength	233 mm



scan the QR code to view a 3D model

**Available in the following coats:**



Pladur® Wrinkle Mat



Poliester Standard (MAT)



SUPERIOR HB



Pladur® Relief IceCrystal



60 Pladur® Wrinkle Mat Plus

## MODERNITY AND TIMELESSNESS

The Trend flat sheet metal roofing tile has been designed with attention to the smallest details. On the one hand, it is a reversal of trends that fits in with modern architectural structures. On the other hand, we are given a timeless flat surface. Modest elegance and unconventional character is a combination that will delight even the most demanding customers. It is flawless precision of workmanship and perfect appearance.

## VERSATILE APPLICATION

The Trend brand of tiles is an economical and modern solution that can impress with its perfect flat and harmonious form. Possibilities that may not be visible at first glance will surprise you already at the design stage. The flat metal roof tile works well on both less and more complex roofs. The Trend provides an eye-catching visual effect. The new roof tile provides a simple assembly system. The low profile guarantees coverage, which makes the product cost less.

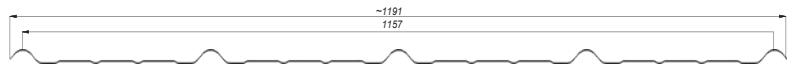




# estima

## TECHNICAL PARAMETERS

Overall width	~1191 mm
Real coverage width	1157 mm
Finished product thickness (steel)	0,5 mm
Finished product thickness (aluminium)	0,6 mm
Min. sheet length	720 mm
Max. sheet length	4920 mm
Rib height	35 mm
Module length	350 mm
Profile height	17,5 mm
Wavelength	289 mm



Available in the following coats:



scan the QR code to view a 3D model



Pladur® Wrinkle Mat/  
Pladur® RAL Premium



Pladur® Relief IceCrystal



60 Pladur® Wrinkle Mat Plus



SUPERIOR HB



Poliester Standard (RAL/MAT)



Super Poliester R-MAT



Aluminium STUCCO /MAT Corase

## OUT OF RESPECT FOR INNOVATION

Estima - symmetrical flat metal roofing tile, made of materials that guarantee quality, safety and comfort. Created for the most demanding customers. It is available in many colors and coatings, so it has wide configuration possibilities. Depending on the choice of protective coating, the manufacturer gives the product a warranty of up to 60 years. In a meeting with Estima, the impression of solidity comes to mind involuntarily. The design will fit very well into both simple and more complicated roof constructions.

## ESTIMA

The materials used for the production of Estima metal roofing tile ensure durability and protection of the house covering against weather conditions such as rain, snow or wind.

The embossing height is 35 mm and the module length is 350 mm. Thanks to such a construction, the tiles are extremely stiff and create an interesting form. Availability in a modular version guarantees efficient transport and convenient assembly.

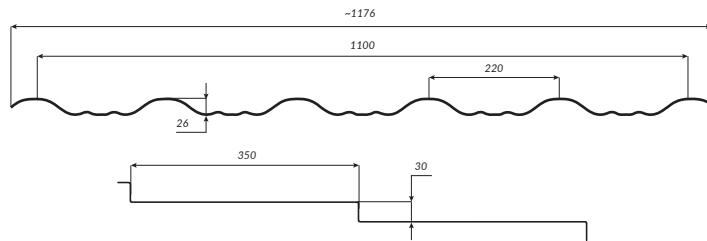




# ENIGMA

## TECHNICAL PARAMETERS

Overall width	~1176 mm
Real coverage width	1100 mm
Finished product thickness (steel)	0,5 mm
Finished product thickness (aluminium)	0,6 mm
Min. sheet length	720 mm
Max. sheet length	max 5970 mm
Rib height	30 mm
Module length	350 mm
Profile height	26 mm
Wavelength	220 mm



scan the QR code to view a 3D model

### Available in the following coats:



Pladur® Wrinkle Mat/  
Pladur® RAL Premium



Pladur® Relief IceCrystal



SUPERIOR HB



Super Poliester R-MAT



Poliester Standard (RAL/MAT)



60 Pladur® Wrinkle Mat Plus



Aluminium STUCCO /MAT Corase

## ENIGMA

Enigma can sneak upon you even when you expect to be amazed. The first surprise is the combination of classics and modernity. The technology is available in most coatings offered by Blachotrapez. Thanks to stamping in the SPS system connected with Pladur® Wrinkle Mat Plus coating, customers receive up to 60 years of written warranty. The symmetrical profile of Enigma is unique and becomes particularly attractive in black and brick-red colours.

Interestingly, Enigma has been tailored to fulfill the expectations of the most demanding roofers. Thanks to its symmetry, it can be laid from left to right, from right to left, or arranged in a running bond pattern.

## BREAKING SPACE-TIME CONTINUUM

The arrangement can be adapted to the specific roof and made according to your own inspiration. Enigma continues to surprise not only roofers, but also homeowners and onlookers, who can admire the roof from every perspective. The innovative technology of stiffening sheets by using a bottom shelf in combination with other product features makes it currently unrivalled on the market. However, one thing should be no surprise to our customers, as it is the feature connecting all Blachotrapez products: extraordinary diligence in the selection of high-quality materials and matching modern technological solutions. Enigma has already entered with bravado into roofing classics for many generations.





# GERMANIA

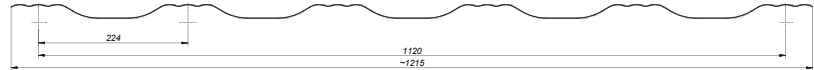
simetric

## TECHNICAL PARAMETERS

Overall width	~1215 mm
Effective coverage width	1120 mm
Thickness of the finished product (steel)	0,5 mm
Finished product thickness (aluminium)	0,6 mm
Recommended length	max 5970 mm
Tile rib height	25/30 mm
Module length	350 mm
Profile height	20 mm



scan the QR code to view a 3D model



### Available in the following coats:



Pladur® Wrinkle Mat/  
Pladur® RAL Premium



Pladur® Relief IceCrystal



SUPERIOR HB



Super Poliester  
R-MAT



Poliester  
Standard (RAL/MAT)



60 Pladur®  
Wrinkle Mat Plus



Aluminium STUCCO  
/MAT Corase

## GERMANIA SIMETRIC

Considering the needs of our Customers, we take care of the highest quality of the offered products. Our products' reputation is also confirmed by the quality of raw materials supplied by the best steel mills, such as: thyssenkrupp and U.S. Steel. It is the material, used in the production, that makes the model of roof sheet Germania Simetric characterized by increased resistance to abrasion, staining and corrosion.

When designing the roof sheet Germania Simetric, we focus on sleek look, durability and economics.

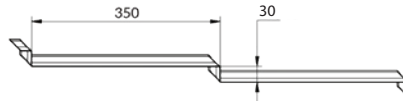
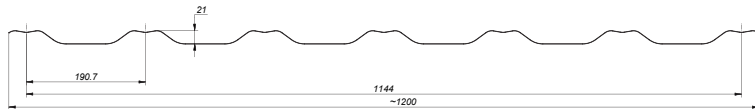
## DURABLE AND BEAUTIFUL ROOF

This innovative and exceptional product is distinguished by a higher profile and a unique triple rib, giving the coverage distinct and timeless character and unconventional look. Utility model of roof sheet Germania Simetric is protected by the Office for Harmonisation in the Internal Market of the European Union. Design no.: 002495606-0001. The written warranty for roof sheets, depending on the type of coat, may even cover the period up to 60 years.





**GERMAN**  
simetric



**TECHNICAL PARAMETERS**

Overall width	~1200 mm
Effective coverage width	1144 mm
Thickness of the finished product (steel)	0,5 mm
Finished product thickness (aluminium)	0,6 mm
Recommended length	max 5970 mm
Tile rib height	30 mm
Module length	350 mm
Profile height	21 mm



scan the QR code to view a 3D model

Available in the following coats:



Pladur® Wrinkle Mat/  
Pladur® RAL Premium



Pladur® Relief IceCrystal



SUPERIOR HB



Super Poliester R-MAT



Poliester Standard (RAL/MAT)



60 Pladur® Wrinkle Mat Plus



Aluminium STUCCO /MAT Corase

## GERMAN SIMETRIC

German Simetric is a symmetric, modular roofing sheet, that our Customers will like for its modern and attractive look, and by roofers - for the ease of assembly. A great advantage of German Simetric is a high-quality raw material - in its production, Blachotrapez uses steel coming from German steelworks of thyssenkrupp, a world leader in this sector. Made of the best raw material, the German Simetric roofing sheet has increased resistance to abrasion and soiling, as well as the highest anti-corrosion resistance on the Polish market.

## PRECISION TAILORED TO YOUR ROOF

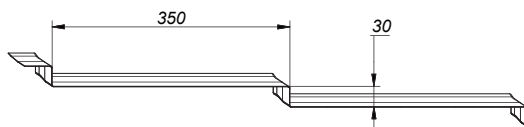
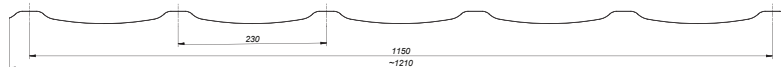
Precision, solidity and classic beauty. When it comes to a few words about German Simetric roofing sheet, such is the summary of its character. Now, even complicated roofing constructions will be a reliable protection for you and your family for long years to come.





### TECHNICAL PARAMETERS

Overall width	~1210 mm
Effective coverage width	1150 mm
Thickness of the finished product (steel)	0,5 mm
Finished product thickness (aluminium)	0,6 mm
Recommended length	max 5970 mm
Tile rib height	30 mm
Module length	350 mm
Profile height	19 mm



scan the QR code to view a 3D model

Available in the following coats:



Pladur® Wrinkle Mat/  
Pladur® RAL Premium



Pladur® Relief IceCrystal



SUPERIOR HB



Super Poliester  
R-MAT



Poliester  
Standard (RAL/MAT)



60 Pladur®  
Wrinkle Mat Plus



Aluminium STUCCO  
/MAT Corase

## NEW DIMENSION OF ROOFING WITH TALIA

Talia is a roofing sheet well known for its slender form. Beautiful shape, with a reinforcement of the original crease, which offers new possibilities for shaping large and small roof surfaces. Unconventional finish of the lower edge of the sheet cut along the shape of the profile, called a 3D finish, enhances additionally the aesthetics of the design.

## DISCOVER A WHOLE PACKAGE OF ADVANTAGES FOR YOUR ROOF

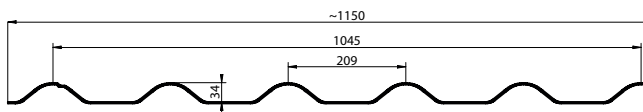
We recommend combining Talia with the SUPERIOR HB premium class coating with a polish guaranteeing an exquisite visual effect created by the coating. In order to achieve an extraordinary strength that will last for years, we recommend Talia with the Pladur® Wrinkle Mat Plus coating. The coating is 50 µm thick and has a high content of zinc and magnesium. Its high quality parameters are certified and backed by a written manufacturer's warranty for up to 60 years. Additionally, Talia model may be purchased with all coatings offered by Blachotrapez.





**TECHNICAL PARAMETERS**

Overall width	~1150 mm
Effective coverage width	1045 mm
Thickness of the finished product (steel)	0,5 mm
Finished product thickness (aluminium)	0,6 mm
Sheet length	725 mm
Tile rib height	30 mm
Module length	350 mm
Profile height	34 mm



**NEW**

**Available in the following coats:**



Pladur® Wrinkle Mat/  
Pladur® RAL Premium



Pladur® Relief IceCrystal



SUPERIOR HB



Super Poliester  
R-MAT



Poliester  
Standard (RAL/MAT)



**60** Pladur®  
Wrinkle Mat Plus



Aluminium STUCCO  
/MAT Corase



Poliester Standard  
mat INNOVA

## DIAMENT PLUS 30

The new version of the modular metal roofing tile, Diamant Plus 30, embodies elegance and functionality. Thanks to its distinct texture and higher offset (30 mm), Diamant Plus will help make the roof truly unique. It is also a popular choice with roofers, who appreciate its easy installation.

## CHARACTERISTIC AND INDISPENSABLE

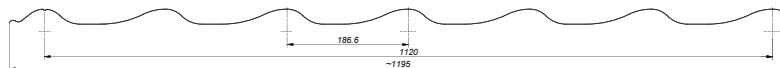
This metal roofing tile is perfect for both minimalist and traditional buildings. Its distinctive line enhances the character of any roof, while its advanced production technology guarantees long service life and robustness.





**TECHNICAL PARAMETERS**

Overall width	~1195 mm
Effective coverage width	1120 mm
Thickness of the finished product (steel)	0,5 mm
Thickness of the finished product (aluminium)	0,6 mm
Recommended length	max 5750 mm
Tile rib height	14 mm
Module length	350 mm
Profile height	22 mm



scan the QR code to view a 3D model

**Available in the following coats:**



Pladur® Wrinkle Mat/  
Pladur® RAL Premium



Pladur® Relief IceCrystal



SUPERIOR HB



Super Poliester R-MAT



Poliester Standard (RAL/MAT)



Pladur® Wrinkle Mat Plus



Aluminium STUCCO /MAT Corase



Poliester Standard mat INNOVA

## KINGAS ECO PLUS

The Kingas Eco Plus metal roofing tile is an elegant lightweight roofing material with a distinct, impressive-looking pattern. The 14-mm step contributes to the characteristic and aesthetic appearance of the roof.

The tiles also have a large effective covering width – 1120 mm for the overall width of 1195 mm, making installation quicker and less expensive.

## ELEGANT LIGHTWEIGHT ROOFING

One of the biggest advantages of Kingas Eco Plus is its uniquely low weight – it is almost ten times lighter than conventional ceramic tiles.

The tile will not strain the roof structure, which is why it is also an excellent choice for renovations of older buildings. Thanks to the subtle wave, Kingas Eco Plus tiles contribute to the harmonious look of the roof, which makes them the perfect solution for houses as well as religious, agricultural and public utility buildings.



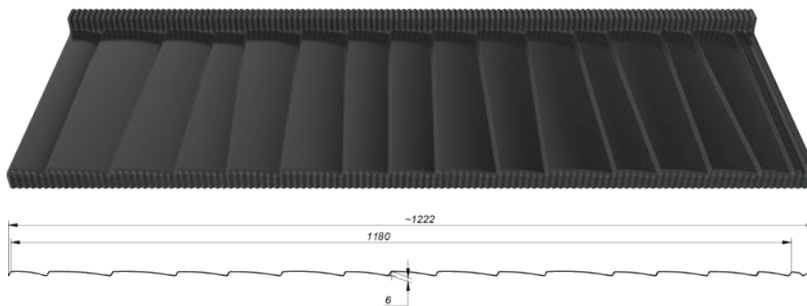


#### TECHNICAL PARAMETERS

Overall width	~1222 mm
Effective coverage width	1180 mm
Thickness of the finished product (steel)	0,5 mm
Tile rib height	35 mm
Module length	380 mm
Profile height	6 mm



scan the QR code to view a 3D model



Available in the following coats:



Pladur®  
Relief Textured Wood



## THE JANOSIK METAL SHINGLE

The Janosik metal shingle is an innovative product with unique design. Its form, texture and appearance thoroughly resemble the wooden shingle. This effect was achieved thanks to innovative technological solutions of the machinery park and the development of basic material PLADUR® Relief Textured Wood.

The PLADUR® Relief Textured Wood coat, designed in resemblance of wood, imitates perfectly its texture and provides a unique visual effect on the roof. High-quality German steel, used for the production of Janosik, is from a renowned steel mill thyssenkrupp, a leader of the global market. Thanks to the securing of the steel core with a mix of zinc and magnesium, metal sheet has a greater durability, and its lifespan has been prolonged.

## TRADITIONAL WOODEN LOOK IN STEEL FORM

The product's incredible appearance has been achieved by adding texture and paint coats. An exceptional durability of paint coats is provided by at least 36 µm. The Janosik metal shingle is highly resistant to corrosion, abrasion, staining and UV radiation. Contrary to wooden shingle, this material does not require frequent and costly maintenance and impregnation, and thus is more functional.

Thanks to a low profile, coverage width is higher and it improves the product cost effectiveness. The Janosik metal shingle is easy and simple to install thanks to the possibility of laying the material on both sides in a brick pattern.





# ROOF PANEL VARIANTS

---

## Legend:

- P - embossing
- PW - embossing, cutout
- PWZ - embossing, cutout, bend
- W - cutout
- WZ - cutout, bend
- NW - nano, cutout
- M - mini
- MW - mini, cutout
- MWZ - mini, cutout, bend
- N - nano



Panel without embossing



Panel without embossing, W



Panel without embossing, WZ



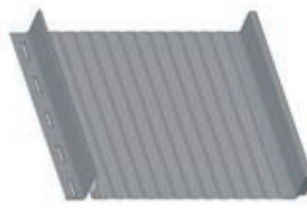
P



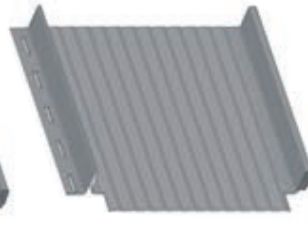
PW



PWZ



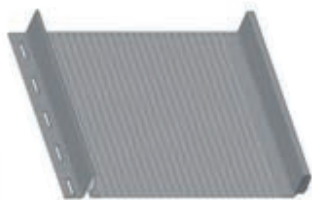
M



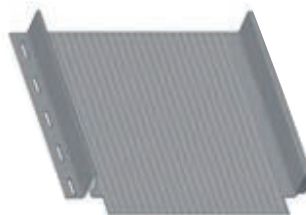
MW



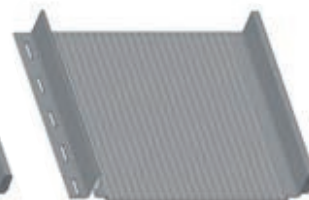
MWZ



N



NW



NWZ



# SNAP LOCK ROOFING PANELS

## CLASSIC LOOK MODERN FORM

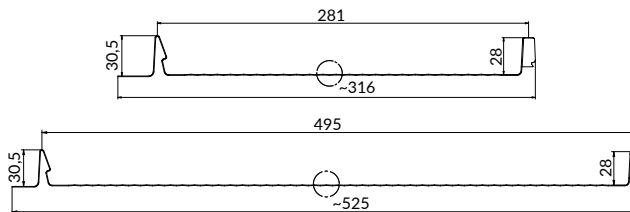
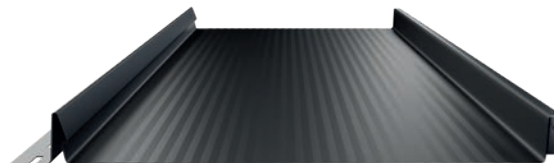
Standing seal snap lock roofing panel is a solution which refers to the traditional “seam or welt” installation system. The need for innovation made Blachotrapez design a product featuring numerous improvements - the Retro standing seam snap lock roofing panel. It combines the functionality, simple and quick installation with the exceptional look of the product, which meets the top design standards. The combination of these features in one product provides for great possibility of shaping the roof surface.



# TERRANO

## TECHNICAL PARAMETERS

Overall width	~316* / ~525 mm
Effective coverage width	281* / 495 mm
Thickness of the finished product (steel)	0,5 mm
Thickness of the finished product (aluminium)	0,6 mm*
Seam height	28 mm
„Clik“ height	30,5 mm
Minimum sheet length	1400 mm
Recommended length	max 8000 mm



\*Not available in the option with the IZO system.

Hydrocontrol



scan the QR code to view a 3D model

### Available in the following coats:



Pladur® Wrinkle Mat/  
Pladur® RAL Premium



Pladur® Relief IceCrystal



Pladur® Relief Textured Wood



Aluminium  
STUCCO® / MAT



Polyester  
Standard (RAL/MAT)

### Available finishes:



Smooth



Rib



Mini-wave\*2



Nano-wave\*2

### AVAILABLE CUT-OUT OPTION:

- cut-outs - cut-outs with bend
- cut-outs for bend - option to bend to starter strip - straight cut



Pladur® Wrinkle Mat Plus



SUPERIOR HB



Super Polyester  
R-MAT

\*Not available in the option with the IZO system.

\*2Not available in STUCCO aluminium coating and Pladur® RAL Premium

## PERFECT PRODUCT

The eye-friendly visual effect is due to the click lock technology, which ensures the aesthetic connection of two panels. Moreover, the application of mini-wave and nano-wave technology made Terrano reflect light reflections, and the “waving” effect caused by stresses and slight unevenness of the substrate is less visible. The product perfect in every detail is also the optimised height of the rectangular-shaped seam, giving the roofing an elegant and modern look.

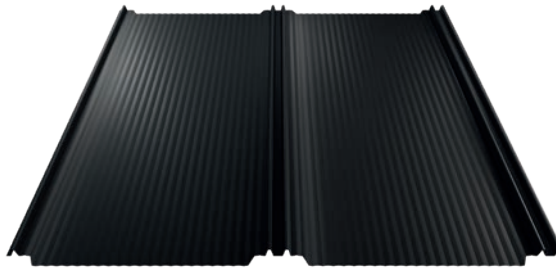
## TERRANO IZO – EVEN MORE POSSIBILITIES

The Blachotrapez offer includes the innovative IZO system, which is the only one available on the Polish market. One of the many advantages of the system is the increased rigidity of the panel, thanks to which the roofing retains its impeccable shape. In addition, panels with a special mat heat up more evenly. IZO also means a number of functional benefits. Ensure acoustic comfort – the system minimises noise and absorbs panel vibrations, which is confirmed by external laboratory tests. Peace and harmony in the interior of your house.



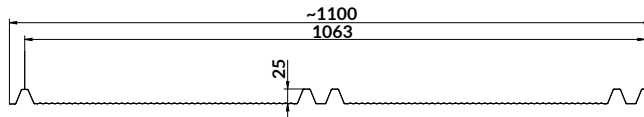


# T-PANEL



## TECHNICAL PARAMETERS

Overall width	~1100 mm
Effective coverage width	1063 mm
Thickness of the finished product (steel)	0,5 mm
Thickness of the finished product (aluminium)	0,6 mm
Profile depth	25 mm
Sheet length	max 8000 mm



scan the QR code to view a 3D model

### Available of coatings in nano-wave finish:



Pladur® Wrinkle Mat/  
Pladur® RAL Premium\*



Pladur® Relief IceCrystal



Pladur® Relief Textured Wood



Pladur® Wrinkle Mat Plus



SUPERIOR HB



Poliester Standard mat INNOVA



Super Poliester R-MAT



Aluminium STUCCO\* / MAT



Poliester Standard (RAL/MAT)

\*Available in smooth surface finish only

## TAILORED TO THE NEEDS

T-Panel is a breakthrough high-class flat roofing product. Tailored to the needs of a modern customer, it will perfectly fit into the surrounding architecture.

The material used is high-quality steel from reputable suppliers. T-Panel is available, among others, in PREMIUM class coatings with the longest written guarantee of durability up to 60 years. It is a reliability of technical and aesthetic lifespan of the roof.

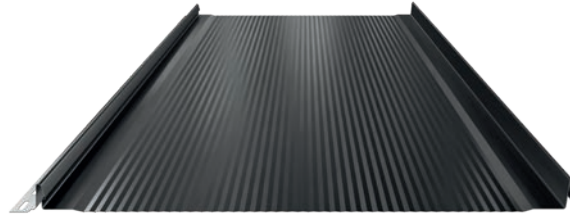
## EXCELLENT SURFACE FINISHING

T-Panel sheets have a number of advantages. Double rib stiffens the sheet and disperses stresses resulting from thermal expansion of the sheet. T-Panel provides an eye-catching visual effect, and the technology used minimises the risk of waves. The product is available in two versions of surface finishing: smooth and nanowave. The full harmony of aesthetics also means masked screws. The screws are optically hidden between the two trapeziums. Discover our full product range developed in cooperation with roofers.





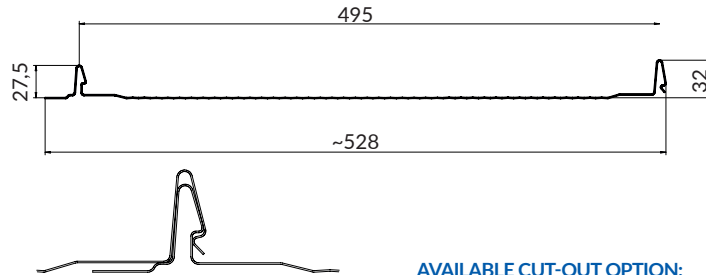
**PANEL™**  
HIGH-TECH



**TECHNICAL PARAMETERS**

Overall width	~528 mm
Effective coverage width	495 mm
Thickness of the finished product (steel)	0,5 mm
Seam height	32 mm
„Clik“ height	27,5 mm
Sheet length	max 8000 mm

Hydrocontrol



View of the panels folded together

**AVAILABLE CUT-OUT OPTION:**

- cut-outs - cut-outs with bend
- cut-outs for bend - option to bend to starter strip

**Available in the following coats:**



Pladur®  
Wrinkle Mat



Pladur®  
Relief Textured Wood



Pladur®  
Wrinkle Mat Plus



Pladur®  
Relief IceCrystal



SUPERIOR HB



Poliester Standard  
mat INNOVA



Poliester RAL  
wooden-like 0,5



Poliester  
Stand. (RAL/MAT)

## PANEL HIGH-TECH

Technological innovation in each area allows to fulfil the desires and needs. The best evidence of this is the High-Tech Panel. It is the result of modern cooperation of roofers, market leaders and Blachotrapez specialists. It redefines the shape of a standing seam snap lock roofing panel. This is the most advanced technology available on the market - it meets the expectations of roofers, architects and investors implementing bold future projects.

## IMPROVED DESIGN FUNCTIONALITY

A special profile external snap lock with optimized height for easy installation. Its design reduces sheet tension. This is the latest snap lock clamping technology available on the market. In addition, a special rise at snap locks provides even contact of the flat panel surface to the substrate and reduces waving.





## PANEL RETRO 25

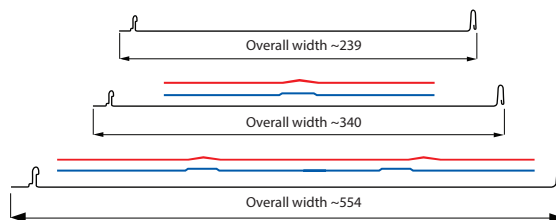
### TECHNICAL PARAMETERS

Seam height	25 mm
Effective coverage width	521/309/209
Overall width	~554/~340/~239
Thickness of the finished product (steel)	0,5 mm
Thickness of the finished product (aluminium)	0,6 mm
Sheet length	max 8000 mm

Hydrocontrol



scan the QR code to view a 3D model



### AVAILABLE CUT-OUT OPTION

- cut-outs - cut-outs with bend
- cut-outs for bend - option to bend to starter strip
- straight cut

### Available in the following coats:



Pladur® Wrinkle Mat/  
Pladur® RAL Premium



Pladur® Relief Textured Wood



Pladur® Wrinkle Mat Plus



Pladur® Relief IceCrystal



Super Poliester R-MAT



Aluzinc



Poliester Stand. (RAL/MAT)



Poliester Standard mat INNOVA



SUPERIOR HB



Aluminium STUCCO /MAT Corase

## RETRO SNAP LOCK ROOFING PANEL 25

It can be used as a roof covering or as a building façade. Equipped with a snap lock, installation is quick and guarantees a high degree of tightness. Retro is ideal for both the restoration of historic buildings and modern construction, as well as sacred and public buildings.

## FUNCTIONALITY

Retro 25 snap lock roofing panels are available in three widths and options with no, one or two ribs. Noteworthy is their increased rigidity, which allows them to be laid on battens without the need for roof boarding. In addition, panels with Hydrocontrol can be used to increase protection against moisture.







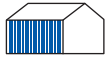
# TROUGHED ROOF SHEET

## TRADITIONAL ROOF AND FACADE COVERAGE

Troughed roof sheets are exceptional due to their distinctive shape and simplicity. It is a universal and economic material for fast coverage of both roofs and facades. It allows for erecting impressive structures which break the traditional division between roof and facade. Troughed roof sheets are eagerly selected by constructors as material for roof of industrial and public buildings. The owners of single-family houses also more often decide to use the troughed roof sheet, as such roof sheet perfectly presents on the building with modern, minimalistic architecture and environmentally friendly style.

Troughed roof sheets are above all practical. Thanks to a wide range of sheet thickness in, tailored cutting service and abundant colour selection, its applications are unlimited. As an important feature, its rigidity and durability is determined by the profile height.

For small and medium-size buildings, the following troughed sheet profiles will be the best: T7/T7 PRO, T14 +, T18, T18 +, T20 +, T35, T35 +, T50. T50 sheet metal plates are used in large commercial buildings, such as production halls.

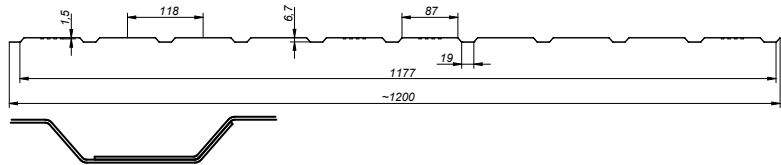
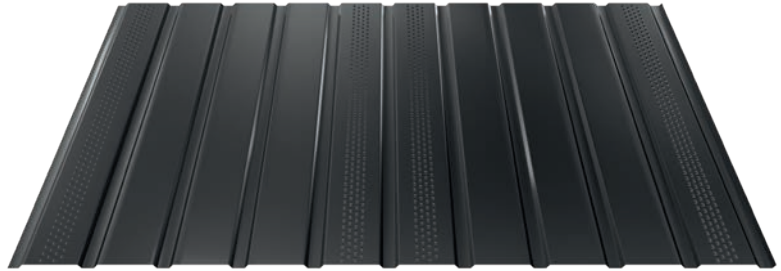


# T-7/T-7 PRO

## TECHNICAL PARAMETERS

Overall width	~1200 mm
Effective coverage width	1177 mm
Thickness of the finished product (steel)	0,5 mm
Thickness of the finished product (aluminium)	0,6 mm*
Recommended length	6 rm

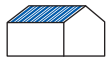
\* Not available with perforation



Available in the following coats:

- Pladur® Wrinkle Mat/ Pladur® RAL Premium\*
- Pladur® Relief IceCrystal
- SUPERIOR HB
- Super Poliester R-MAT
- Poliester Standard (RAL/MAT)
- Pladur® Wrinkle Mat Plus
- Aluzinc
- Poliester RAL wooden-like 0,5
- Poliester Standard mat INNOVA
- Aluminium STUCCO /MAT Corase\*
- Pladur® Relief Wood

\* Not available with perforation



# T-14<sup>+</sup>

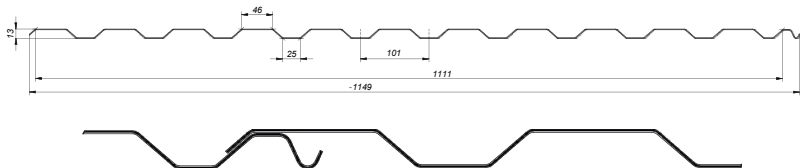
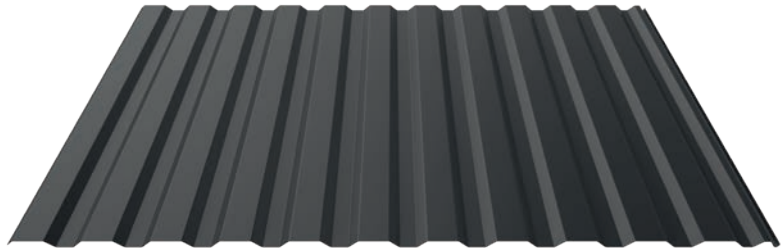
## TECHNICAL PARAMETERS

Overall width	~1149 mm
Effective coverage width	1111 mm
Thickness of the finished product (steel)	0,5-0,7 mm
Thickness of the finished product (aluminium)	0,6 mm
Recommended length	max 8 rm

Hydrocontrol

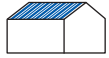


scan the QR code to view a 3D model



Available in the following coats:

- Pladur® Wrinkle Mat/ Pladur® RAL Premium
- Pladur® Relief IceCrystal
- SUPERIOR HB
- Super Poliester R-MAT
- Poliester Standard (RAL/MAT)
- Pladur® Wrinkle Mat Plus
- Aluzinc
- Poliester RAL wooden-like 0,5
- Poliester Standard mat INNOVA
- Aluminium STUCCO /MAT Corase



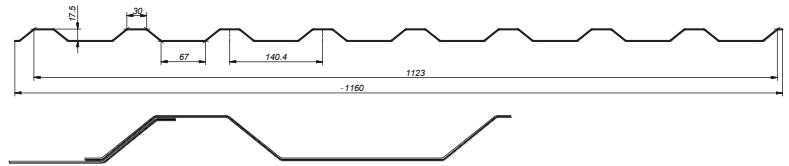
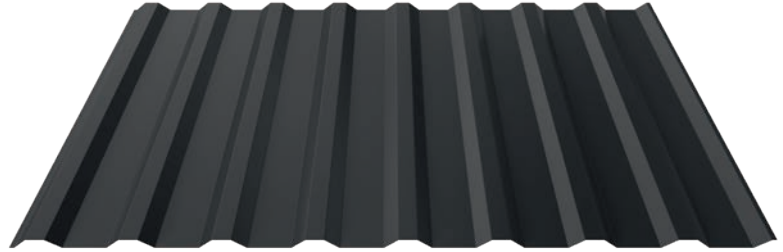
# T-18

## TECHNICAL PARAMETERS

Overall width ~1160mm  
 Effective coverage width 1123 mm  
 Thickness of the finished product (steel) 0,5-0,75 mm  
 Thickness of the finished product (aluminium) 0,6 mm  
 Recommended length max 10 rm

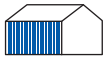


scan the QR code to view a 3D model



### Available in the following coats:

- Pladur® Wrinkle Mat/ Pladur® RAL Premium
- Pladur® Relief IceCrystal
- SUPERIOR HB
- Super Polyester R-MAT
- Polyster Standard (RAL/MAT)
- 60 Pladur® Wrinkle Mat Plus
- Aluzinc
- Polyster RAL wooden-like 0,5
- IN Polyster Standard mat INNOVA
- Aluminium STUCCO /MAT Corase



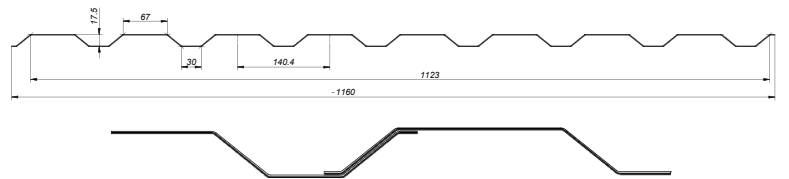
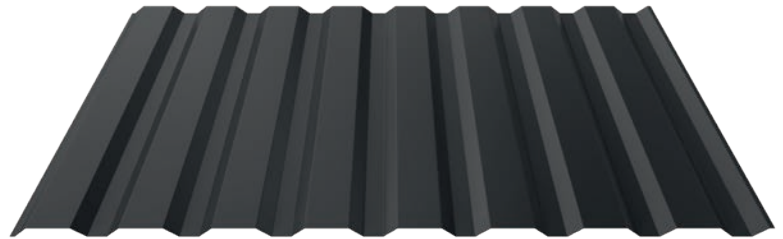
# T-18

## TECHNICAL PARAMETERS

Overall width ~1160 mm  
 Effective coverage width 1123 mm  
 Thickness of the finished product (steel) 0,5-0,75 mm  
 Thickness of the finished product (aluminium) 0,6 mm  
 Recommended length max 10 rm



scan the QR code to view a 3D model



### Available in the following coats:

- Pladur® Wrinkle Mat/ Pladur® RAL Premium
- Pladur® Relief IceCrystal
- SUPERIOR HB
- Super Polyester R-MAT
- Polyster Standard (RAL/MAT)
- 60 Pladur® Wrinkle Mat Plus
- Aluzinc
- Polyster RAL wooden-like 0,5
- IN Polyster Standard mat INNOVA
- Aluminium STUCCO /MAT Corase



# T-18+

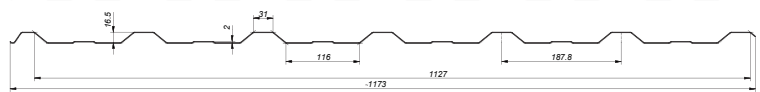
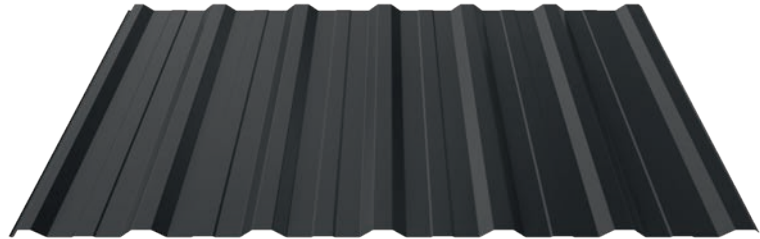
## TECHNICAL PARAMETERS

Overall width ~1173 mm  
 Effective coverage width 1127 mm  
 Thickness of the finished product (steel) 0,5-0,75 mm  
 Thickness of the finished product (aluminium) 0,6 mm  
 Recommended length max 12 rm

Hydrocontrol



scan the QR code to view a 3D model



### Available in the following coats:

Pladur® Wrinkle Mat/  
Pladur® RAL Premium

Pladur® Relief IceCrystal

SUPERIOR HB

Super Polyester R-MAT

Polyester Standard (RAL/MAT)

60 Pladur® Wrinkle Mat Plus

Aluzinc

Polyester RAL wooden-like 0,5

IN Polyester Standard mat INNOVA

Aluminium STUCCO /MAT Corase

# T-18+

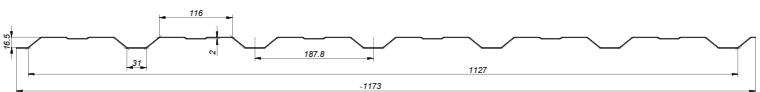
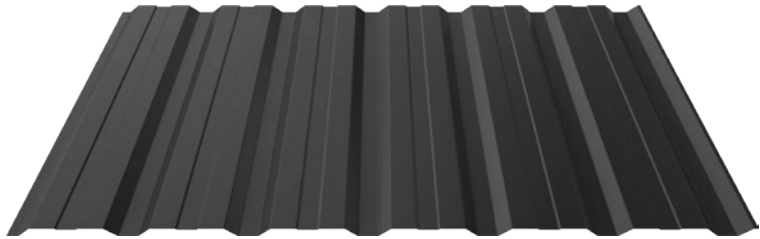
## TECHNICAL PARAMETERS

Overall width ~1173 mm  
 Effective coverage width 1127 mm  
 Thickness of the finished product (steel) 0,5-0,75 mm  
 Thickness of the finished product (aluminium) 0,6 mm  
 Recommended length max 12 rm

Hydrocontrol



scan the QR code to view a 3D model



### Available in the following coats:

Pladur® Wrinkle Mat/  
Pladur® RAL Premium

Pladur® Relief IceCrystal

SUPERIOR HB

Super Polyester R-MAT

Polyester Standard (RAL/MAT)

60 Pladur® Wrinkle Mat Plus

Aluzinc

Polyester RAL wooden-like 0,5

IN Polyester Standard mat INNOVA

Aluminium STUCCO /MAT Corase



# T-20<sup>+</sup>

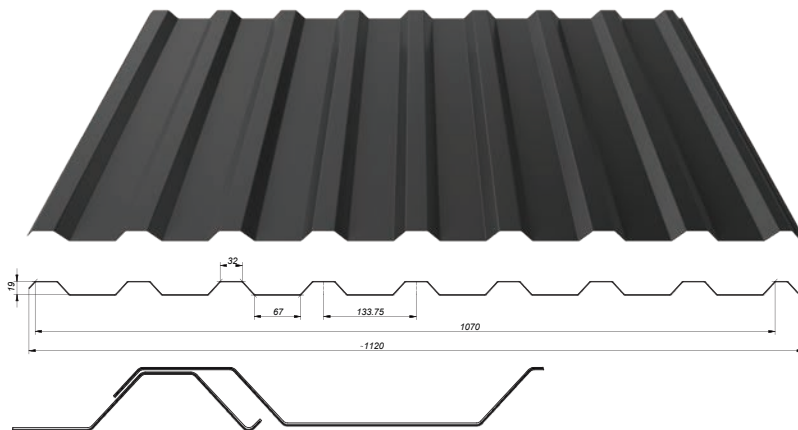
## TECHNICAL PARAMETERS

Overall width	~1120 mm
Effective coverage width	1070 mm
Thickness of the finished product (steel)	0,5-0,75 mm
Thickness of the finished product (aluminium)	0,6 mm
Recommended length	max 12 rm

Hydrocontrol

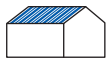


scan the QR code to view a 3D model



Available in the following coats:

-  Pladur® Wrinkle Mat/  
Pladur® RAL Premium
-  Pladur® Relief IceCrystal
-  SUPERIOR HB
-  Super Polyester R-MAT
-  Polyester Standard (RAL/MAT)
-  60 Pladur® Wrinkle Mat Plus
-  Aluzinc
-  Polyester RAL wooden-like 0,5
-  Polyester Standard mat INNOVA
-  Aluminium STUCCO /MAT Corase



# T-35+

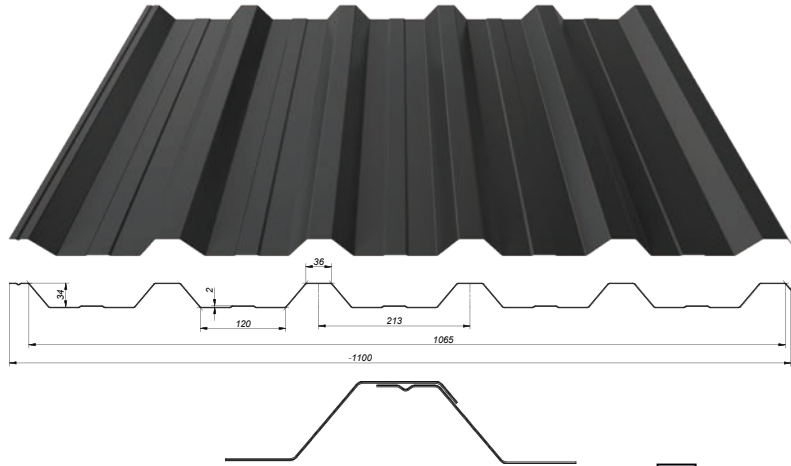
## TECHNICAL PARAMETERS

Overall width ~1100 mm  
 Effective coverage width 1065 mm  
 Thickness of the finished product (steel) 0,5-1 mm  
 Recommended length max 12 rm

Hydrocontrol



scan the QR code to view a 3D model



Available in the following coats:



Pladur® Wrinkle Mat/  
Pladur® RAL Premium



Pladur® Relief IceCrystal



SUPERIOR HB



Super Poliester R-MAT



Poliester Standard (RAL/MAT)



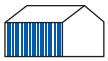
60 Pladur® Wrinkle Mat Plus



Aluzinc



Poliester Standard mat INNOVA



# T-35+

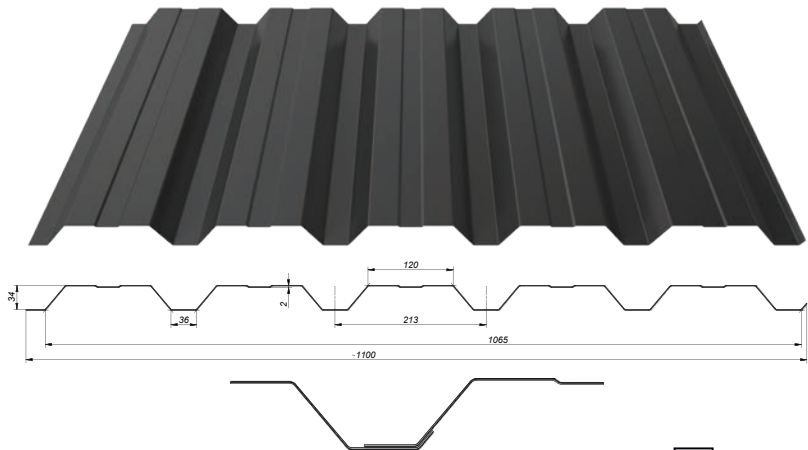
## TECHNICAL PARAMETERS

Overall width ~1100 mm  
 Effective coverage width 1065 mm  
 Thickness of the finished product (steel) 0,5-1 mm  
 Recommended length max 12 rm

Hydrocontrol



scan the QR code to view a 3D model



Available in the following coats:



Pladur® Wrinkle Mat/  
Pladur® RAL Premium



Pladur® Relief IceCrystal



SUPERIOR HB



Super Poliester R-MAT



Poliester Standard (RAL/MAT)



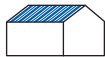
60 Pladur® Wrinkle Mat Plus



Aluzinc



Poliester Standard mat INNOVA



# T-50

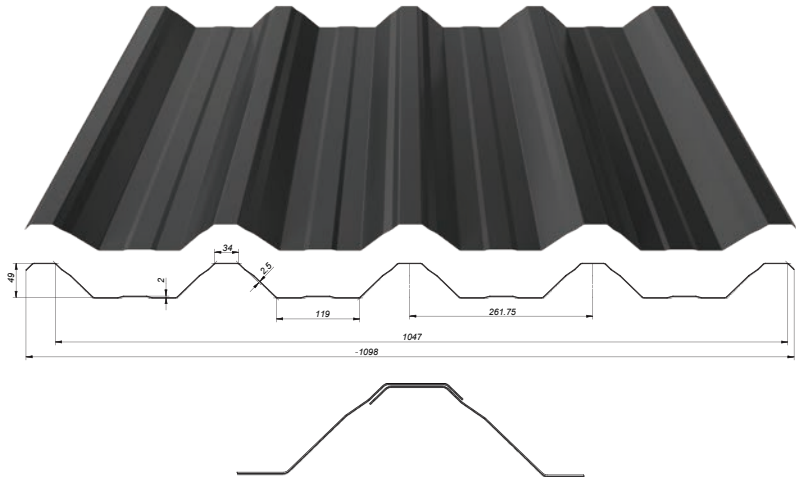
## TECHNICAL PARAMETERS

Overall width ~1098 mm  
 Effective coverage width 1047 mm  
 Thickness of the finished product (steel) 0,5-1,0 mm  
 Recommended length max 12 mm

Hydrocontrol

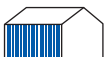


scan the QR code to view a 3D model



Available in the following coats:

- Pladur® Wrinkle Mat/  
Pladur® RAL Premium
- Pladur® Relief IceCrystal
- SUPERIOR HB
- Super Polyester R-MAT
- Poliester Standard (RAL/MAT)
- 60 Pladur® Wrinkle Mat Plus
- Aluzinc
- Poliester Standard mat INNOVA



# T-50

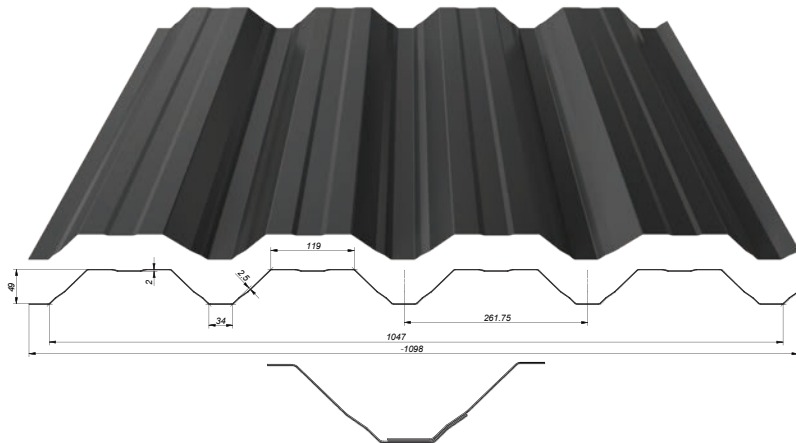
## TECHNICAL PARAMETERS

Overall width ~1098mm  
 Effective coverage width 1047 mm  
 Thickness of the finished product (steel) 0,5-1,0 mm  
 Recommended length max 12 mm

Hydrocontrol



scan the QR code to view a 3D model



Available in the following coats:

- Pladur® Wrinkle Mat/  
Pladur® RAL Premium
- Pladur® Relief IceCrystal
- SUPERIOR HB
- Super Polyester R-MAT
- Poliester Standard (RAL/MAT)
- 60 Pladur® Wrinkle Mat Plus
- Aluzinc
- Poliester Standard mat INNOVA



Pladur®  
Relief IceCrystal

Pladur® Relief iceCrystal  
TK 3009

Pladur® Relief iceCrystal  
TK 8019

Pladur® Relief iceCrystal  
TK 7016

Pladur® Relief iceCrystal  
TK 9005



Pladur® Wrinkle Mat

Pladur® Wrinkle  
MAT TK 6020

Pladur® Wrinkle  
MAT TK 8004

Pladur® Wrinkle  
MAT TK 3009

Pladur® Wrinkle  
MAT TK 8017

Pladur® Wrinkle  
MAT TK 8019

Pladur® Wrinkle  
MAT TK 7016

Pladur® Wrinkle  
MAT TK 7024

Pladur® Wrinkle  
MAT TK 9005



Pladur® RAL Premium

Pladur® RAL  
Premium 3009

Pladur® RAL  
Premium 7016

Pladur® RAL  
Premium 8004

Pladur® RAL  
Premium 8017

Pladur® RAL  
Premium 9005

Pladur® RAL  
Premium 9006

Pladur® RAL  
Premium 9007



SUPERIOR HB

SUPERIOR HB  
RAL 8004 HB

SUPERIOR HB  
RAL 3009 HB

SUPERIOR HB  
RAL 8017 HB

SUPERIOR HB  
RAL 8019 HB

SUPERIOR HB  
RAL 7016 HB

SUPERIOR HB  
RAL 7024 HB

SUPERIOR HB  
RAL 9005 HB



Pladur®  
Wrinkle Mat Plus

Pladur® Wrinkle  
Mat Plus 8019

Pladur® Wrinkle  
Mat Plus 7016

Pladur® Wrinkle  
Mat Plus 9005



Poliester Standard RAL  
/ Poliester Standard mat (AM)

\*Colours not available in Poliester Standard mat (AM) coating.

RAL 3005*	RAL 3009	RAL 3011*	RAL 5010*	RAL 6020*	RAL 6029*
RAL 7016	RAL 7024	RAL 8004	RAL 8017	RAL 8019	RAL 9005
RAL 9006*	RAL 9010*				



Aluminium STUCCO  
/MAT

\*Colours not available in Aluminium MAT coating.

Aluminium 3011*	Aluminium 9005	Aluminium 7016	Aluminium 8017
-----------------	----------------	----------------	----------------



Super Poliester  
R-MAT

Super Poliester R-MAT 9007	Super Poliester R-MAT 7016	Super Poliester R-MAT 9005
-------------------------------	-------------------------------	-------------------------------



Poliester Standard  
mat INNOVA

RAL 7016	RAL 7024
RAL 8004	RAL 8017
RAL 8019	RAL 9005
RAL 3009	



Aluzinc



Poliester RAL  
wooden-like 0,5

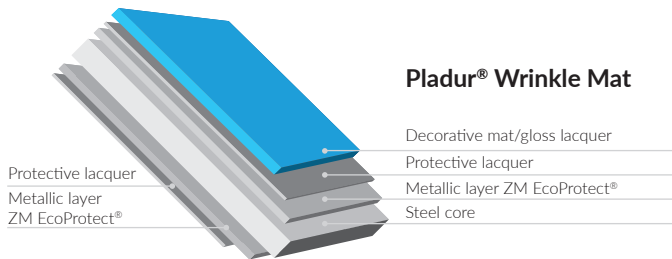
Aluzinc 185	Walnut	Natural oak	Golden oak 3D
	Rustic	Sapphire	Golden oak



**Pladur® Wrinkle Mat Plus**



**Pladur® Wrinkle Mat Plus** - coarse-grained, 2-layer coating system, in colours according to known colour schemes, with layer thickness of min. 50 microns.



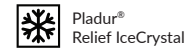
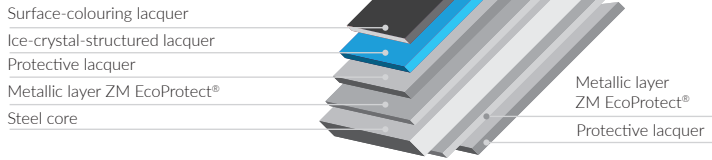
**Pladur® Wrinkle Mat**



**Pladur® Wrinkle Mat** - thick-grain, double-layer coating system, with colours according to well-known patterns and min. coat thickness 35 microns. The sheets meet the requirements of class A2 in accordance with the Commission Decision 96/603/EC on fire protection and may be used in the corrosion category C4 according to the standard EN ISO 12944-2.



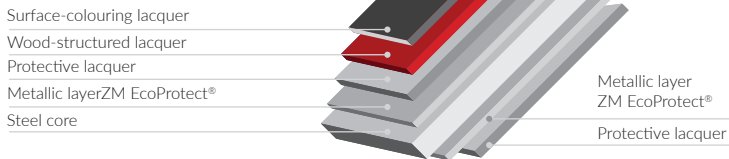
### Pladur® Relief IceCrystal



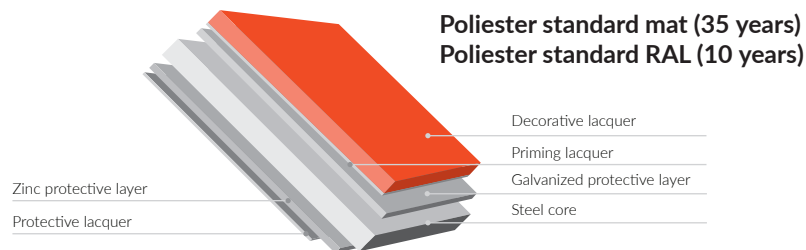
**Pladur® Relief iceCrystal** - sheets with a proprietary surface structure imitating patterns of frozen ice, triple-layer coating system, min. coat thickness 36 microns. The sheets meet the requirements of class A2 in accordance with the Commission Decision 96/603/EC on fire protection and may be used in the corrosion category C4 according to the standard EN ISO 12944-2.



### Pladur® Relief Wood

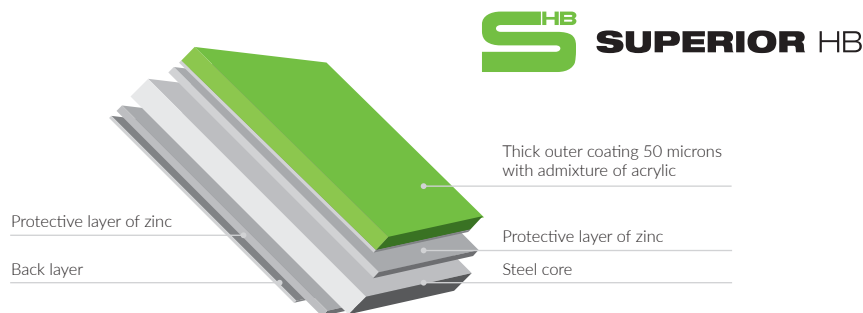


**Pladur® Relief Textured Wood** - sheets with a proprietary surface structure imitating wood, triple-layer coating system, min. coat thickness 36 microns. The sheets meet the requirements of class A2 in accordance with the Commission Decision 96/603/EC on fire protection and may be used in the corrosion category C4 according to the standard EN ISO 12944-2.



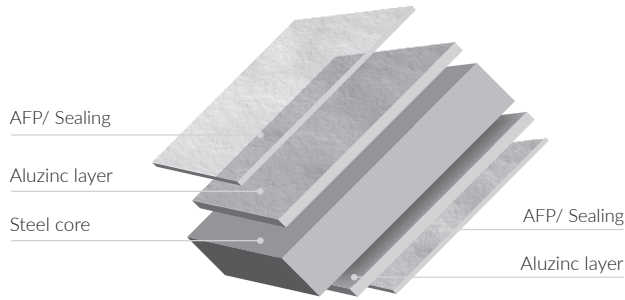
 Poliester Standard (RAL/MAT)

**Poliester Standard** - coated sheets are the most popular option for metal roofing. Currently, sheets that are double-side galvanized with anti-corrosive layer, priming or organic paint are used. The top layer provides the colour and texture, as well as protects against outdoor conditions.

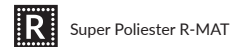
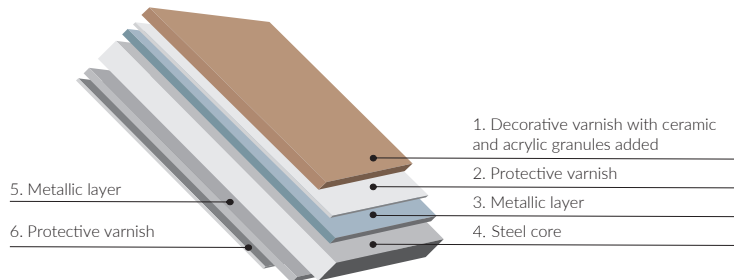


 SUPERIOR HB

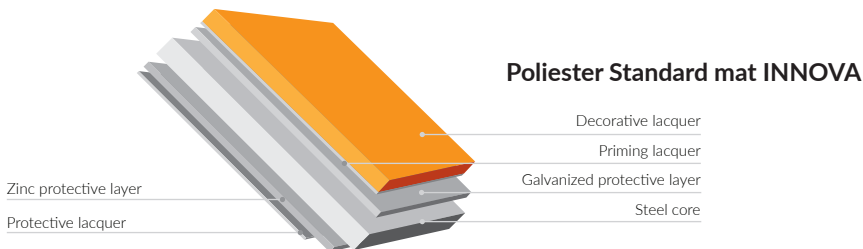
**SUPERIOR HB** - is a ground-breaking alternative for smooth polyester surface. Thanks to an addition of acrylic compounds, the coat texture is slightly grained and it reflects light with a flickering effect. The acrylic additive additionally hardens the paint surface and ensures higher resistance to scratching. Lacquered sheets with metallic coating SUPERIOR HB meet the requirements of class A1 in accordance with the Commission Decision 96/603/EC on fire protection. The products with SUPERIOR HB coating system may be used in the corrosion category C4 according to the standard EN ISO 12944-2.



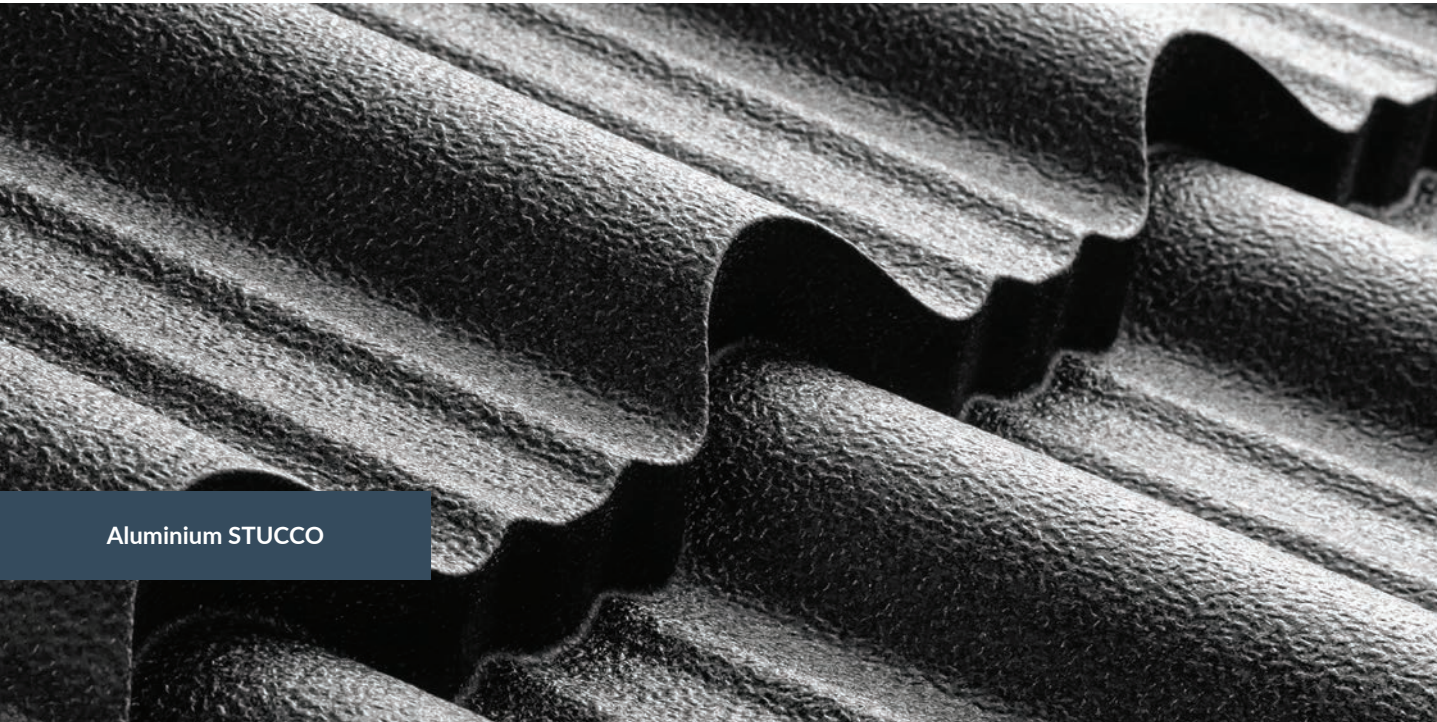
**Aluzinc AZ185** into the production of roofing! Aluzinc is a sheet covered on both sides with an aluminium and zinc alloy in an electroplating process similar to hot galvanizing process. Thanks to the component proportions of Aluminium 55%, Zinc 43.4% and Silicon 1.6% our products are highly resistant to corrosion thanks to the synergy between the zinc cathodic protection and aluminium screening effect. For manufacturing processes Blachotrapez uses only Aluzinc of 185 g/m<sup>2</sup> (subject to 25 years of warranty). The sheets meet the requirements of class A1 in accordance with the Commission Decision 96/603/EC on fire protection and may be used in the corrosion category C4 according to the standard EN ISO 12944-2.



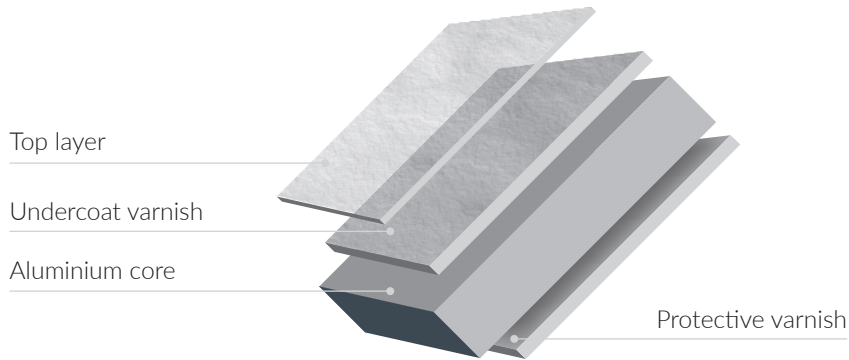
Steel sheets with **Super Poliestere R-MAT** coating provide high scratch resistance and UV stability. The varnish applied is a combination of a thick primer and a super-polyester topcoat with the addition of ceramic and acrylic granules. This guarantees very good resistance to external weather conditions.



**Poliester Standard mat INNOVA** – coated sheets commonly used on roofs have a metallic coating applied on both sides for effective corrosion protection. The surface is coated with a base coat and an organic coat. The last coat gives the colour and texture and provides protection against external factors.



Aluminium STUCCO



Aluminium STUCCO  
/ MAT Corase

**STUCCO aluminium** – The uniquely shaped surface of the metal sheet (orange peel) gives an exclusive appearance, better damping of rain noise and a high level of user comfort.



The material is extremely light at density of only  $2.7\text{g}/\text{cm}^3$ . This facilitates designing a lighter building structure, so you can save on construction costs.



The material is 100% renewable and recyclable, which makes it eco-friendly. It does not lose its own original properties during this process.



Heavy duty and durable. The tensile strength of currently produced aluminium alloys is comparable to steel. Aluminium is resistant to harsh weather conditions, making it often a natural choice in many applications.



The plasticity of the material makes it soft and easy to process for a roofer. This feature means that almost any product can be formed from aluminium.



Corrosion-resistant aluminium automatically self-covers with a thin layer of oxygen, rebuilding itself, which prevents further oxidation.



## STEEL SERVICE CENTRE (SSC)

The Steel Service Centre (SSC) is intended for customers looking for a material with specific properties and processing level. The processing includes winding, cutting along and across and protection according to the customer's individual needs. We also accept the orders using the customers' materials, which are optimally used within our advanced production processes. The processing services offered by Blachotrapez include the processing of galvanised, Aluzinc and organic-coated steel.

## HYDROCONTROL



The water vapour condensation consists in a change of state of water vapour on the surface of uninsulated steel roofing. Such phenomenon depends on many factors, including but not limited to: construction of roofing and its thermal insulation. The water vapour condensation may result in dampening of roof, and thus fungus growth or corrosion. In extreme cases it may result in room flooding or freezing. BLACHOTRAPEZ offers a simple and effective solution for this problem - anti-condensation coating Hydrocontrol. This is a self-adhesive membrane, which is fixed to the back side of the sheet.

## SPS

The technological SPS process allows profiling steel material under optimum climatic conditions - independent of the ambient temperature. With its use, input materials can be perfectly plasticised, and this especially goes for paint coatings. Key benefits that SPS technology brings is primarily acquisition of such properties and parameters that increase the durability of the material supplied by our company and the quality of its execution. The applied technology makes the coating material extremely resistant to the destructive effects of external factors, corrosion and damage. Simultaneously, it does not lose its properties, ensuring effective roof protection and high aesthetic values for many years to come. With all these factors resulting from the use of SPS, we have achieved the greatest success - extension of the warranty period for Polyester Standard coating (gloss, matt) by an additional five years for separation of coatings."



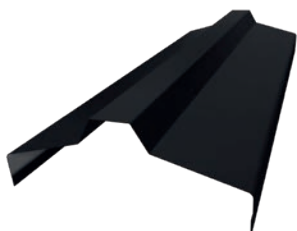
Safe  
Profiling  
System



Dedicated to  
**JANOSIK**  
metal shingle  
MARYNA sprocket



Dedicated to  
**JANOSIK**  
metal shingle  
Janosik powder skirt



Dedicated to  
**JANOSIK**  
metal shingle  
GRAN ridge tile



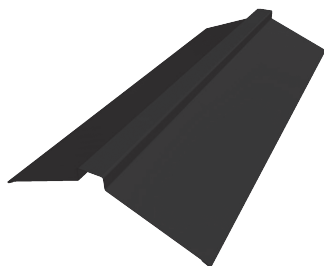
Dedicated to  
  
Powder skirt



Dedicated to  
  
Ridge tile



Dedicated to  
  
Troughed ridge tile



Dedicated to  
  
Trough ride tile PLUS



Dedicated to  
  
Flat ridge tile



## TRANSPORT

The ordered material shall be delivered to the place indicated by Customer (it is possible to pick the order up with own transport). Unloading should be performed with professional equipment or, in case of its unavailability, manually by an appropriate number of people. This will enable to avoid scratches, deformations or other accidental damage according to the storage and transport instructions and terms of warranty.

## STORAGE

The stored materials should not touch the ground directly. The material should be stored in a dry and ventilated place and kept away from aggressive substances (pesticides, acids). The products secured with protective film should not be exposed to strong sunlight (remember to remove the film immediately). It is also recommended not to store the purchased materials for a period longer than 3 months according to the storage and transport instructions and terms of warranty.

## INSTALLATION

For sheet installation we recommend self-tapping screws with EPDM washers (extremely resistance to low and high temperatures). The suggested number of screws used for installation is 5-8 pcs/m<sup>2</sup>. Sheets must be cut with special vibrating shears (Nibler). Do not use any disc-cutters which may cause the lacquer damage! After completing the work remove thoroughly all remains from sheet surface according to the storage and transport instructions and terms of warranty.



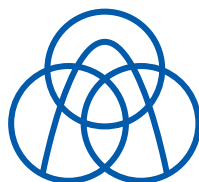


TÜV®

Produkt Sprawdzony

No: 0000088684

[certyfikat.tuv-nord.pl](http://certyfikat.tuv-nord.pl)



thyssenkrupp



Blachotrapez Sp. z o. o.  
34-700 Rabka-Zdrój  
ul. Kilińskiego 49a



NIP  
676-243-17-30



[export@blachotrapez.com.pl](mailto:export@blachotrapez.com.pl)  
[www.blachotrapez.eu](http://www.blachotrapez.eu)

REGON  
121387287