



ATENA S.P.A. HAS A QUALITY  
MANAGEMENT SYSTEM CERTIFIED  
BY RINA IN COMPLIANCE WITH  
ISO 9001

# Atena Façades



*Green*  
INNOVATIVE ARCHITECTURAL SOLUTIONS





## BUILDING COVERING SOLUTIONS

High performance systems  
for **aesthetic**, **energy** and  
**seismic improvement**  
of **external building**  
**covering**.



## SUSTAINABLE PRODUCTS FOR SUSTAINABLE PROJECTS

### SHAPING THE FUTURE

The **building renewal** is a great opportunity to enhance the existing heritage, all **Atena cladding solutions** contribute to the improvement of **building energy saving** and **seismic safety**.

Combined with wall thermal insulations Atena claddings are widely used as part of the insulating package of **ventilated** or **adherent** facades.

Require an **Atena professional consultancy** to choose the best technical solution, according to the intended use of the building and the features of the site.

## THE BEST RENEWAL WITH ATENA SYSTEM

Over **30 years of experience** in the sector,  
safe and **long-lasting systems**, properly  
conceived to develop the  
most creative **design vision**,  
and meet all technical  
requirements for the  
most daring projects of  
**sustainable buildings**.



### Certifications:

Atena has a certified management system according to UNI EN ISO 9001 standard

All products for civil application are tested by independent laboratories, comply with the technical standards for construction NTC 2018 and EUROCODICI, to the Italian ministerial decree DM 11 January 2017, C.A.M. and the requirements of the applicable technical standards.

INNOVATIVE ARCHITECTURAL SOLUTIONS

Green



ARCHITECTURAL FACADES

# HIGH PERFORMANCE SYSTEM

For the **architectural façade segment**, Atena has developed a complete range of covering solutions that includes **custom made panels, metal mesh systems, smooth, corrugated, undulated, crinkled surface modules, sunscreens** and **linear staves**: properly conceived to create innovative architectural facades able to become part of **building automation**, where even the finishing elements will be dynamic and intelligent.

And it is thanks to a **qualified design department** and a **advanced manufacturing plant** that Atena coverings are today synonymous of design and functionality, executive precision, quality of materials and processes, environmental sustainability and **high levels of technical performance**.

**Atena Architectural Façades:**  
technical solutions for  
contemporary architecture.

## Metal coverings

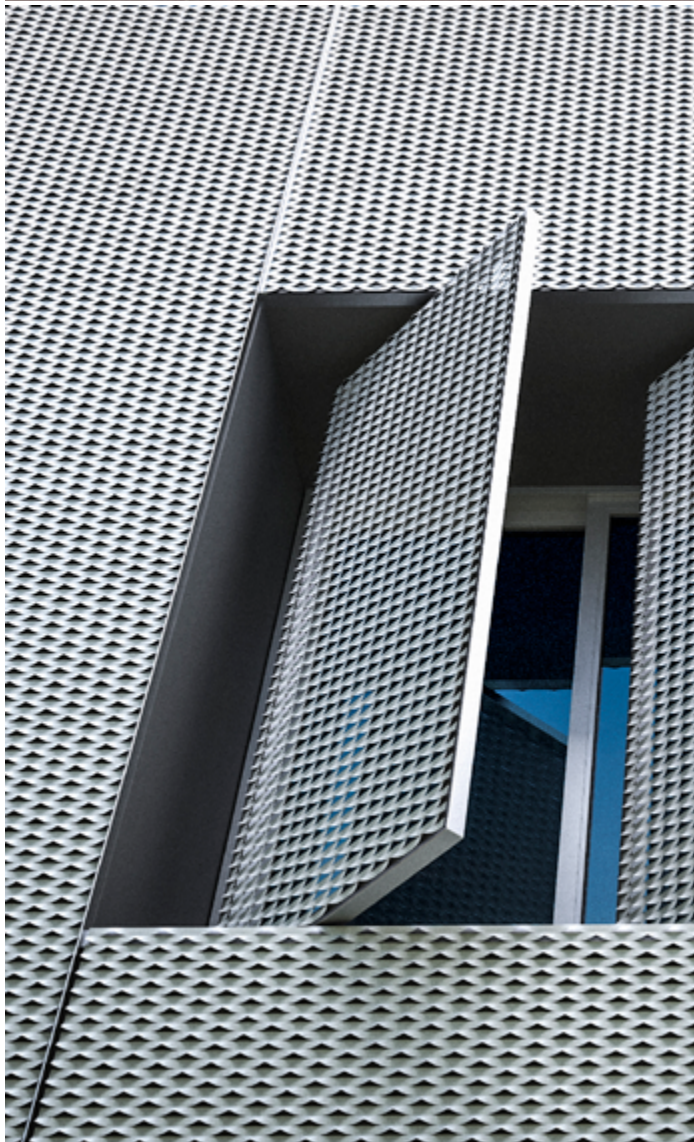
### Atena plus

- 1 Energy Saving
- 2 Custom-made design
- 3 Wind load resistance
- 4 Antiseismic features
- 5 Anti-vibration features
- 6 Air purification
- 7 Sound proofing
- 8 Durability



## A COMPLETE RANGE

- 1 FORMAL**  
Hooking claddings
- 2 FORMAL 3D MOOD**  
Hooking 3D claddings
- 3 FORMAL EASY and LINE UP**  
Direct fixing panels
- 4 LINEAR**  
Hooking staves
- 5 SUNSCREEN**  
Sunscreen systems
- 6 METAL MESH**  
Metal mesh modules
- 7 METAL FIX**  
HPL modules
- 8 MATERIC FIX**  
Corrugated | Undulated panels
- 9 AUTOMATION**  
Smart systems



Metal coverings



## VENTILATED FACADES

# HIGH RESISTANCE

Maximum performance



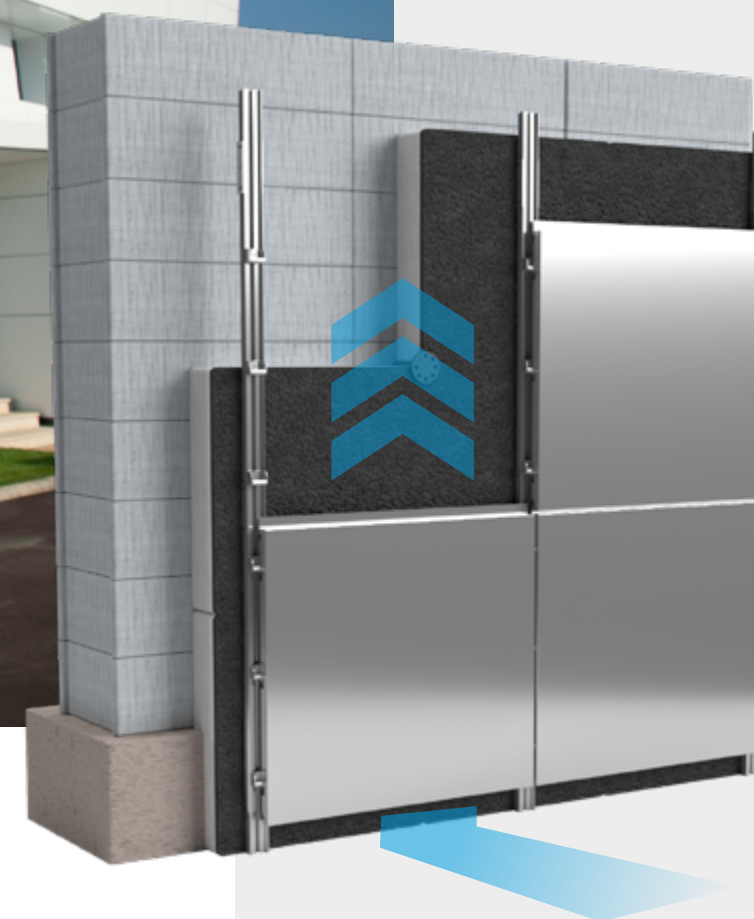
Seismic engineering  
wind load resistance  
anti-vibration features  
soundproofing

The ventilated facades are characterized by a ventilation gap that separates the external covering from the wall.

The effectiveness of the construction system depends on the overall quality of the stratigraphy in order to achieve the parameters required.

## Advanced Screens

The Atena external coverings are **advanced screens** properly conceived to create **ventilated facades** in compliance with UNI 11018, UNI EN ISO 6946 technical standards, the Presidential Decree 59/2009 and the law in force concerning the **building opaque walls**, for the **full satisfaction of facades systems**.





## AUTOMATED SOLUTIONS

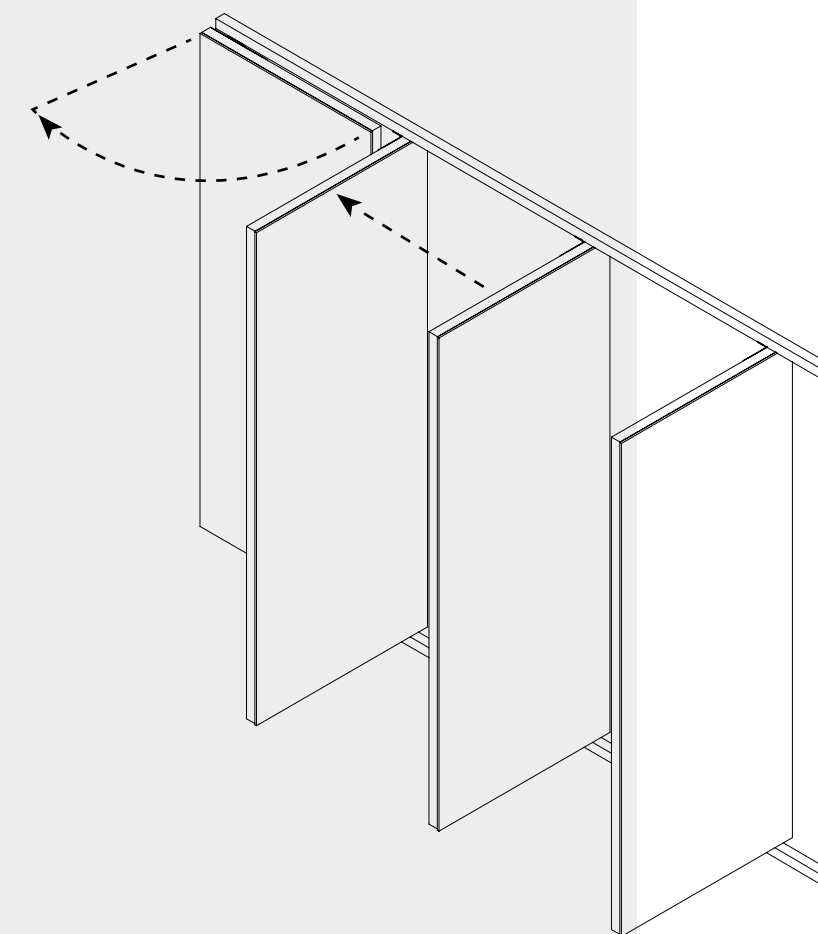
# SUN CONTROL

Automation

## Smart systems

Atena designs and manufactures **claddings** and **sunscreens** for **building automation systems**, using the **latest generation solutions** to **save energy**, increase the **value of the building** and improve the **people comfort** thanks to a right supply of natural light.

The system includes **IoT Integration** and **automated management** of **sunscreen moving** in relation to sun's position, the temperature and the presence of people.





POLLUTION FREE SYSTEM

theBreath®  
TECHNOLOGY  
healthier air to breathe



ADSORBENT



BACTERICIDE



ENERGY FREE



ANTI-ODOR

AIR  
PURIFICATION  
PANEL

theBreath®

theBreath® is a a revolutionary air purification technology made up of a **nanotech multilayer tissue** combined with **perforated metal panels** or **metal mesh modules** to absorb and disaggregate harmful particles, pollutants and pathogens **making healthier air to breathe.**

The theBreath® purification process is completely **passive** and uses the natural air flow without other energy sources.

ANNUAL ABSORPTION PROJECTIONS\*



**1450**  
DIESEL  
ENGINE



**3625**  
GASOLINE  
ENGINE

**10 m²** per year of theBreath® absorb the **NO<sub>x</sub>** (Nitrogen Dioxide) emissions of **~1450 DIESEL ENGINE** cars and the (Volatile Organic Compounds) **VOC** emissions of **~3625 GASOLINE ENGINE CARS\***

POLLUTANT	ABSORPTION
Toluene (C <sub>7</sub> H <sub>8</sub> )	Up to 97,2%
VOC* Eptano (C <sub>7</sub> H <sub>16</sub> )	Up to 96,8%
Formaldehyde (CH <sub>2</sub> O)	Up to 92,2%
Sulphur Oxide (SO <sub>2</sub> )	Up to 91,5%
Nitric Oxide (NO <sub>x</sub> )	Up to 86,8%
Benzene (C <sub>6</sub> H <sub>6</sub> )	Up to 62%
Ozone (O <sub>3</sub> )	Continuous reaction in the atmosphere

\*The test refer to cars passing through an area covered by theBreath®. The number of cars involved and the area in which the benefit is reported are proportional to panel size.

theBreath® has been tested and certified in compliance with:  
ISO 16000-9 | UNI 11247 | Test ANSI/AHAMAC1 2002



## HIGH TECHNOLOGY FINISHING

# DECORATIVE PATTERN

Surface finishing

- Wide range of **DECORATIVE FINISHING**
- **EXCLUSIVE FINISSAGE**
- **LASER CUTTING**
- **“DOT ART”** technology to reproduce the image in a configuration of perforated panels
- **“3D MOOD”** system and **“DESIGN MOLDING”** to make volumetric shapes
- high performance **NANOTECH COATING**
- Amazing **MATERIC TOUCH EFFECTS** and **“BRUSHERY”**
- High resolution **DIGITAL PRINTING**
- **LIGHTING EFFECTS** by Atena Lux

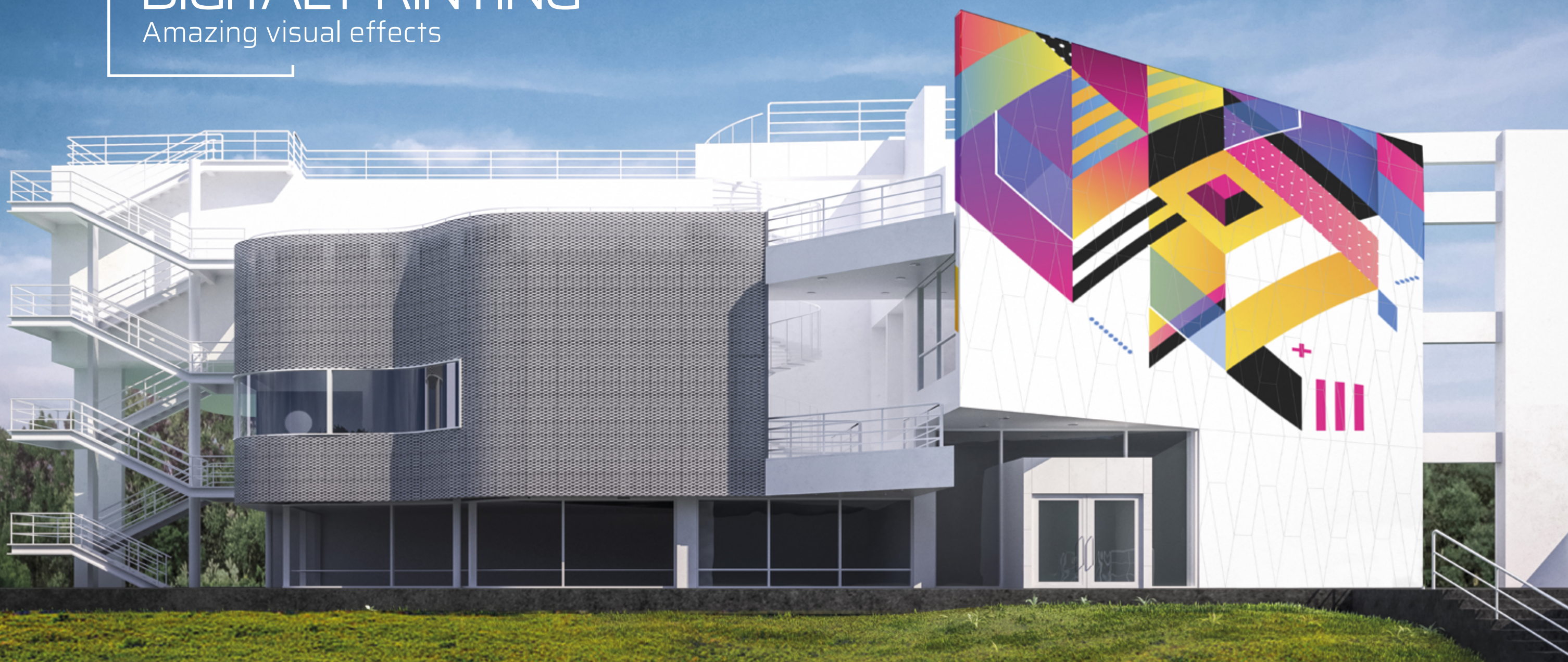




## HIGH TECHNOLOGY FINISHING

# High resolution DIGITAL PRINTING

Amazing visual effects





# DYNAMIC LED LIGHTING

Sparkling scenography *by Atena Lux*



## SOSTENIBILITÀ



*Quality, environment,  
health and safety: together  
for a sustainable architecture.*



### ENVIRONMENT

 **Raw materials** produced with **recycling** processes;

Aluminum and steel products **100% recyclable**;

Products that will not become **hazardous wastes** during demolition / removal.



### LIFE BASED DESIGN

Acoustics, lighting technology and shape of spaces: the **Atena false ceilings and coverings** are conceived to create comfortable environments that support the **psycho-physical well-being** of people according to the **modern environmental psychology criteria**.



**EPD 2020** is the certification program started by Atena to stand out its best systems from the environmental point of view, in compliance with the current **green procurement requirements**.

### HEALTHINESS



**Safe and fireproof products** that do not release dangerous substances into the environment; Paints and sublimations are performed with **VOC-free substances**.



### GREEN BUILDING

Get credits for building certification according to the **LEED protocol** and to BREEAM and ITACA standards for cross-cutting aspects, by using Atena products.



### SEISMIC ENGINEERING

**Academic and experimental research**, patented systems and technical solutions for the highest degree of **earthquake safety**.



### GREEN ENERGY

By joining the **"100% clean energy Dolomiti Energia"** certification program, Atena uses energy from **renewable sources**.

Atena's commitment to **Environmental Sustainability** and **Safety** passes through all main company processes to produce **safe products**, whose use contributes to the construction of high performance buildings, conceived to **achieve the highest levels** of comfort, healthiness and respect for the environment.



## References

Innovative  
Architectural  
Solutions:  
*the perfect balance  
between shape  
and space.*

### Contacts:

Atena S.p.A.  
+39 0421 75526  
export@atena-it.com

Via Alcide de Gasperi - 52  
30020 - Gruaro (VE) Italia



TO BE INSPIRED  
[atena-it.com](http://atena-it.com)







atena<sup>®</sup>