



PROFILE OF INNOVATION



Photo: Villeroy & Boch



Schluter Profiles

Details make the difference



12



32



18

WHAT'S INSIDE

5 In the Kitchen

17 In the Bathroom

35 Schluter Profiles

Details MAKE THE Difference

Many homeowners approach tile installation projects with a list of materials consisting of thin-set, tiles, and grout...But it doesn't stop there. In fact, the only way to achieve a tile installation that is as beautiful as it is functional is through the use of finishing and edge-protection profiles.

Ceramic and stone tiles have become a popular trend in the design industry due to the durability and aesthetic appeal they offer. The extensive variety of available shapes, colors, patterns, and sizes opens the door to unlimited design possibilities. Unfortunately, a lack of trim pieces such as bullnose or quarter round in many tile lines can limit design options.

Schluter®-Systems offers a solution to this problem with various finishing and edge-protection profiles, which increase design flexibility because they can be integrated with any field tile.

Protect the edges

Though tiles are extremely durable, their edges are vulnerable to chipping and cracking if left unprotected. Imagine investing your time, money, and hard work into a tile project, only to end up with chips in your tile edges.

Schluter profiles are designed to produce a long-lasting installation by protecting tile edges from damage.

Caulking - a thing of the past

Nobody likes caulking. It is used purely out of necessity to seal joints or seams, and allow for movement at floor/wall transitions and inside wall corners, or where tile meets a fixed element. Not only is caulking unsightly, it is not a permanent solution.

Schluter profiles eliminate the need for caulking in tile installations. With cover-shaped profiles for floor/wall transitions and inside wall corners, and movement joint profiles with flexible zones to absorb movement, caulking has become a thing of the past.

Just for looks

While the majority of profiles are produced to meet functional installation needs, they can also be used to enhance design. Schluter decorative profiles are produced exclusively for design purposes and are available in a variety of finishes to accent the field tile, match fixtures in the room, or create a decorative border around a mosaic insert.

A profile for every style

Schluter profiles can blend with the tile color for a subtle finish, or contrast with the tile to create an accent.

Whatever your design style, the wide variety of available materials, finishes, colors, and styles of Schluter profiles helps ensure you will find a profile suiting your decor and installation needs.

Unleash your creativity!

Look inside to view examples of the many beautiful and functional design concepts at your disposal when you work with Schluter profiles.

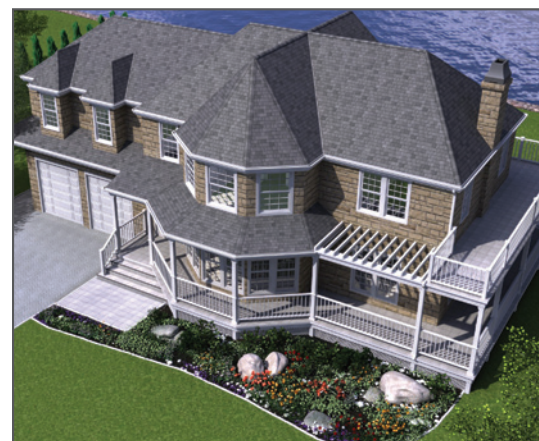
BECOME THE MASTER OF YOUR TILE PROJECT!



Visit SchluterHouse.com

The Interactive Tile Center

The Schluter House is an interactive and educational website where you can navigate through the rooms of a 3D house and discover a variety of tile installations. With installation videos, product handbooks, and virtual rooms you can customize, the SchluterHouse.com is the most resourceful site to consult prior to starting any tile project.





In the KITCHEN

Tiled countertops provide the perfect combination of functionality and beauty. They are resistant to high heat, staining, and scratching, and are easy to clean. Plus, today's large-format tiles allow for minimal grout joints. Schluter profiles make it easy to produce stunning sink rails, hygienic backsplash transitions, and practical tiled-under sinks.





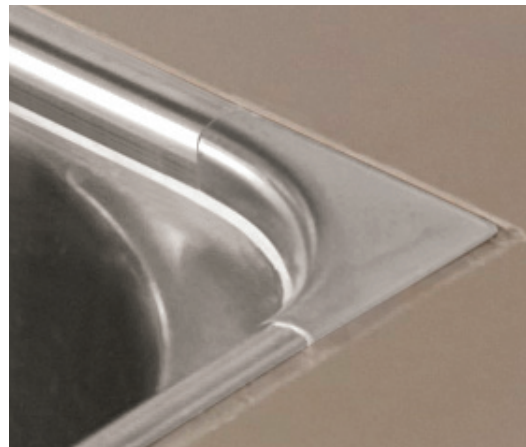
Tuscan beige profiles blend perfectly with the large-format tiles on the countertop, and frame the mosaic insert in the backsplash in this modern kitchen.



RONDEC-CT double-rail countertop edging profile applied to the sink rail. **RONDEC** bullnose profile used to finish the tile edges of the backsplash, and produce the tiled-under sink. **DILEX-AHK** cove-shaped profile used to create a smooth transition between the countertop and backsplash. **QUADREC-FS** double-rail edging profile used to frame the decorative mosaic insert in the backsplash. **DILEX-EKE** PVC corner movement joint profile inserted in the backsplash corners to create a seamless transition. Matching corners used throughout.



The satin anodized aluminum profile on the sink rail creates a bold, sleek finish in this modern kitchen design.



RONDEC-STEP countertop edging profile applied to the sink rail. **RONDEC** bullnose profile and large radius sink corners used to produce the tiled-under sink. **DILEX-AHK** cove-shaped profile used to create a smooth transition between the countertop and backsplash.



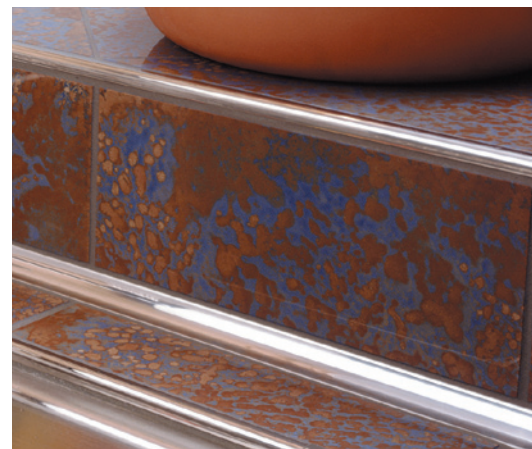
This charming country kitchen was given a modern twist with nickel profiles and stainless steel appliances.



RONDEC bullnose profile and corners used to finish the tile edges of the backsplash and tile base. **RONDEC-CT** double-rail countertop edging profile applied to the sink rail. **DILEX-AHK** cove-shaped profile used to create a smooth transition between the countertop and backsplash.



Unique porcelain tile, natural wood, and terracotta accents give this kitchen a rustic feel, while stainless steel profiles and fixtures add a modern touch.



RONDEC bullnose profile and corners used to produce the tiled-under sink and finish the tile edges of the raised ledge and sink rail. **DILEX-EHK** cove-shaped profile used to create a smooth transition between the countertop and backsplash.



Subway tiles on the backsplash, porcelain tiles with granite look, and brushed aluminum profiles match the appliances creating this contemporary kitchen.



RONDEC bullnose profile and corners used to finish the countertop trim and tile edges of the backsplash. RONDEC was also used to produce the tiled-under sink. **RONDEC-CT** double-rail countertop edging profile applied to the sink rail. **DILEX-AHK** cove-shaped profile used to create a smooth transition between the countertop and backsplash.



In the BATHROOM

The timeless beauty of ceramic and stone tiles can bring a relaxing spa feeling home. Schluter profiles are suitable for creating hygienic transitions and protecting tile edges in wet areas. They can also be used to frame shower niches and mosaic inserts, or as accents in tile fields.





White and Tuscan pewter profiles blend with the floor and wall tiles, while a beautiful glass mosaic wall and elegant linear drain complement this modern bathroom.



RONDEC bullnose profile and matching corners used to finish the tile edges on the walls, tubsurround, shower bench, and to trim the shower niche. **RONDEC-CT** double-rail countertop edging profile applied to the sink rail. **DILEX-AHK** cove-shaped profile used to create a smooth transition between the walls and floor. **SHOWERPROFILE-S** profiles eliminate the need to cut wedges of tile and ensure a consistent elevation of the first course of wall tile.



Hexagon shaped tiles installed on the floor and wall of this shower accent the design, while Tuscan bronze profiles complement the rich brown colors and create clean finished edges and corners.



QUADEC square-shaped profile and corners applied to tile edges and outside corners of the shower including the shower bench and niche, and used to finish the tile base. **DILEX-AHK** cove-shaped profile and corners used to create a smooth transition between the walls and floor.



Stainless steel profiles and a sleek linear drain accent the stunning mosaic tile in this contemporary barrier-free bathroom.



RONDEC bullnose profile and corner piece accessories used to finish the tile edges on the partition wall and shower bench. **DESIGNLINE** decorative border profile applied to the wall. **DILEX-EKE** PVC corner movement profile inserted in the shower corners and along the bench to create a seamless transition. **SHOWERPROFILE-S** profiles eliminate the need to cut wedges of tile and ensure a consistent elevation of the first course of wall tile.



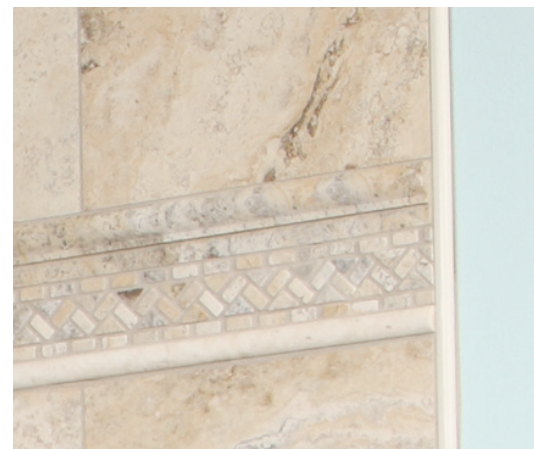
Tuscan beige profiles create a natural feel that complements the beige tiles perfectly. Brushed nickel fixtures, and a frameless linear drain complete the look.



QUADEC square-shaped profile and corners applied to the tile edges of the walls, shower curb, and sink rail.
DILEX-AHK cove-shaped profile used to create a smooth floor/wall transition.



The tile chosen for this shower offered beautiful listellos, but no bullnose tile for the edges. Light beige profiles integrated perfectly with the tile and eliminated the need for matching bullnose tile.



RONDEC bullnose profile used to finish the tile edges on the wall and tile base.



Brushed chrome profiles complete the look of this modern bathroom.



RONDEC bullnose profile used to finish the tile edges on the walls.
DILEX-BWA PVC corner movement profile in bright white used to create a seamless transition between the tub and walls.



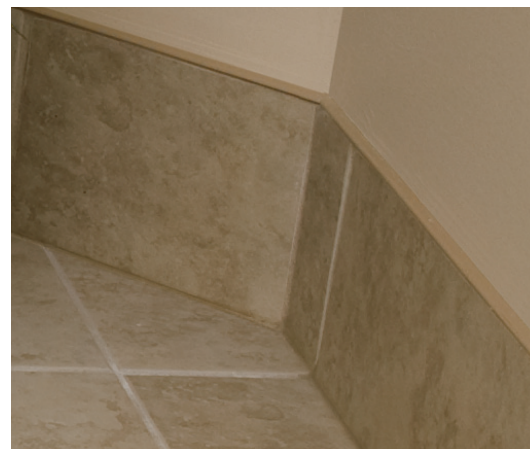
Satin nickel profiles installed throughout this modern bathroom match the shower fixtures and drain grate creating a professional, finished look.



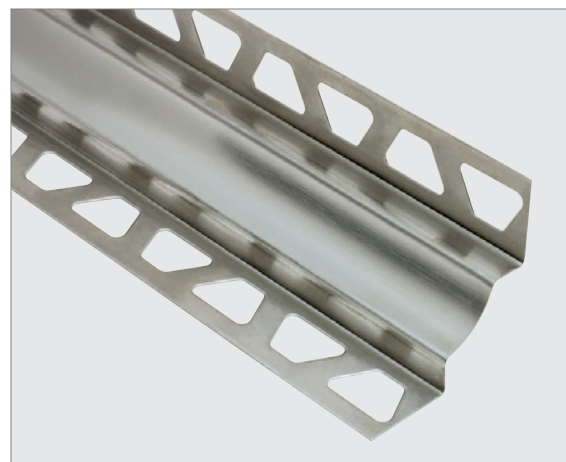
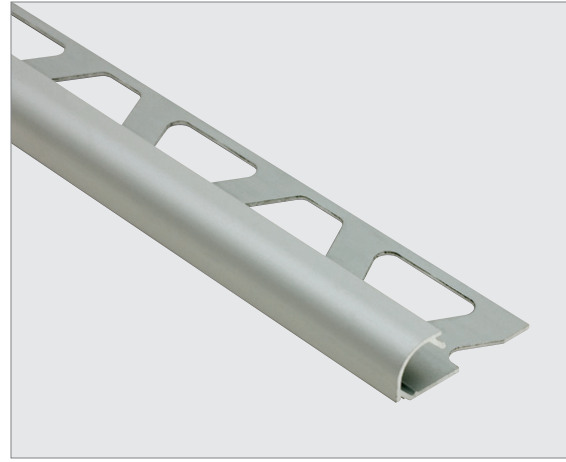
QUADEC square-shaped profile and corners applied to the tile edges of the shower and tile base, and used to create the niche. **QUADEC-FS** double-rail edging profile used to frame the mosaic insert in the wall. **DILEX-EKE** PVC corner movement profile in classic grey used to create a seamless transition between the shower walls and floor.



Light beige profiles create a subtle finish by blending with the neutral tiles in this contemporary bathroom.

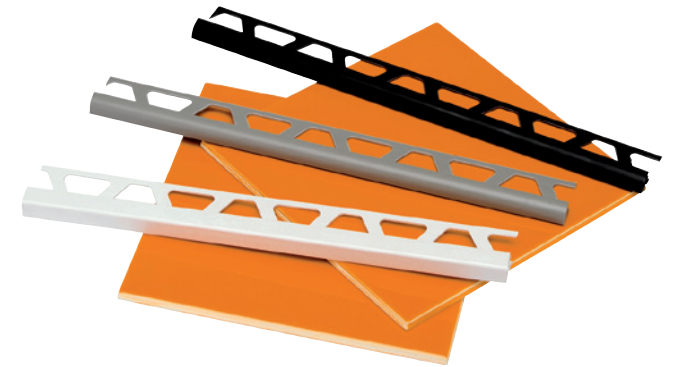


JOLLY L-angle profile applied to the tile edges of the bathtub platform and tile base.



Schluter PROFILES

Leaving tile edges unfinished not only leads to damage, it also drastically diminishes the aesthetic appeal of the design. Schluter profiles finish and protect tile edges, helping to ensure your installation will stand the test of time.



Tile Edges and Outside Wall Corners

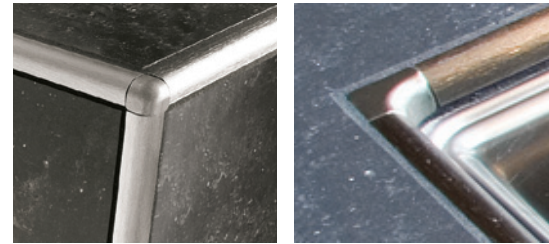
Profiles for tiled edges and outside wall corners finish and protect exposed edges of tiled surfaces such as walls and countertops.



Schluter®-RONDEC

Bullnose profile creating a soft finish to a tiled edge or outside corner installation.

Accessories include: inside and outside corner pieces, sink corner pieces, end caps, and connectors.



Schluter®-QUADEC

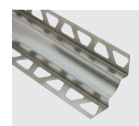
Square-shaped profile creating a sleek look.

Accessories include: inside and outside corner pieces, end caps, and connectors.



Inside Wall Corners

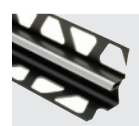
Cove-shaped profiles eliminate the need for caulking, are easy-to-clean and do not trap debris or moisture, making them suitable for use in areas with strict hygienic requirements such as showers and kitchen countertops.



Schluter®-DILEX-AHK

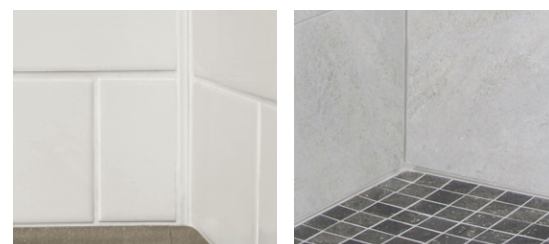
Anodized aluminum profile for applications where limited movement is expected.

Accessories include: inside and outside corner pieces, end caps, and connectors.



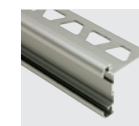
Schluter®-DILEX-EKE

PVC movement joint profile forming a discreet, uniform joint. Available in various colors to match grout.



Countertops

Profiles for countertops finish and protect exposed edges of tiled surfaces. The various finishes available offer endless design possibilities.



Schluter®-RONDEC-CT

Double-rail profile with symmetrically rounded edges matching RONDEC. Features a recessed section for field or accent tile inserts.

Accessories include: inside and outside corner pieces.



Schluter®-RONDEC-STEP

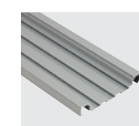
Symmetrically rounded edges matching RONDEC, this profile is also ideal for stair applications.

Accessories include: inside and outside corner pieces.



Decorative Profiles

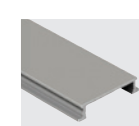
Decorative strip profiles are used to create design accents and interesting contrasts in the tile field. They can be used to frame a mosaic insert, create a break between two different tiles, or as a decorative accent to break up a large tile field.



Schluter®-QUADEC-FS

Double-rail feature strip profile with square edges matching QUADEC. Features a recessed section for field or accent tile inserts.

Accessories include: inside and outside corner pieces.



Schluter®-DESIGNLINE

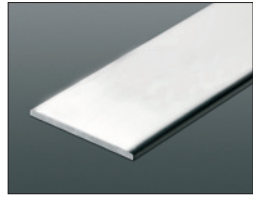
Border profile used to create decorative designs in tile fields on walls or floors.



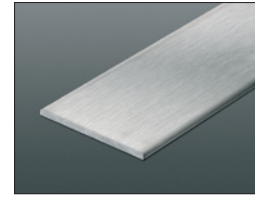
For a complete list of Schluter profiles please visit www.schluter.com

Profile FINISHES and COLORS

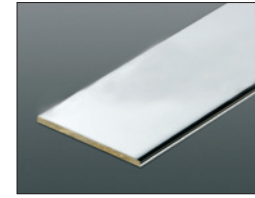
STAINLESS STEEL, CHROME-PLATED BRASS, AND SOLID BRASS



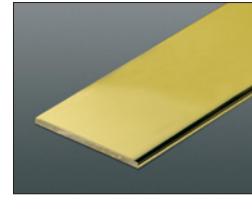
E Stainless steel 304
High-grade stainless
steel 316 L



EB Brushed stainless steel



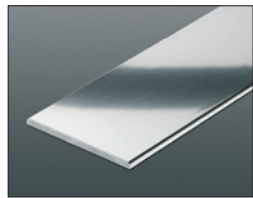
MC Chrome-plated solid brass



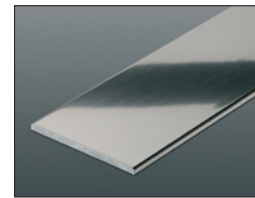
M Solid brass

ANODIZED ALUMINUM

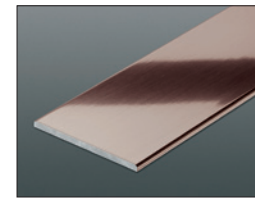
Polished and bright anodized aluminum



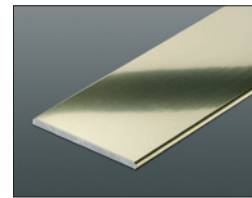
ACG Polished chrome
anodized aluminum
ACB Bright chrome
anodized aluminum



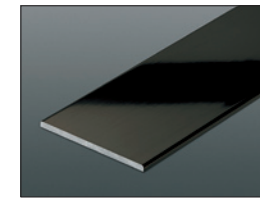
ATG Polished nickel
anodized aluminum
ATB Bright nickel
anodized aluminum



AKG Polished copper/bronze
anodized aluminum
AKB Bright copper/bronze
anodized aluminum

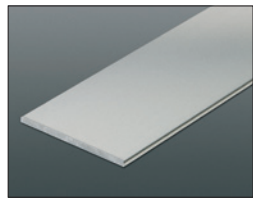


AMG Polished brass
anodized aluminum
AMB Bright brass
anodized aluminum

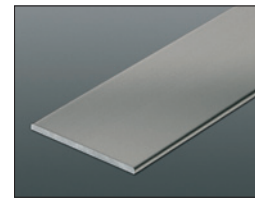


AGSG Bright black
anodized aluminum

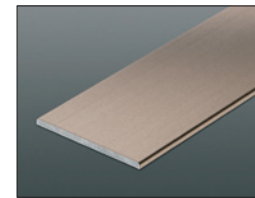
Satin anodized aluminum



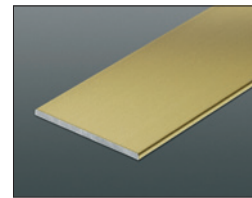
AE Satin anodized aluminum



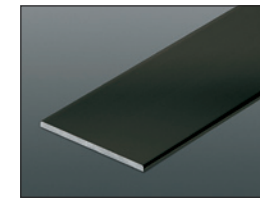
AT Satin nickel
anodized aluminum



AK Satin copper/bronze
anodized aluminum

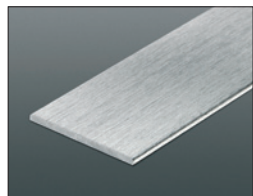


AM Satin brass anodized
aluminum

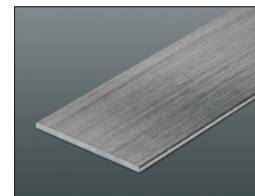


AGR Graphite anodized
aluminum

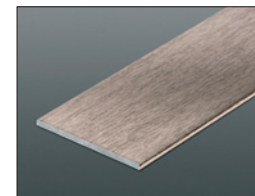
Brushed anodized aluminum



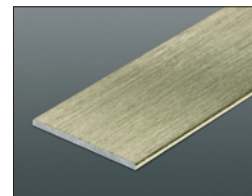
ACGB Brushed chrome
anodized aluminum



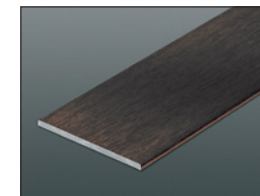
ATGB Brushed nickel
anodized aluminum



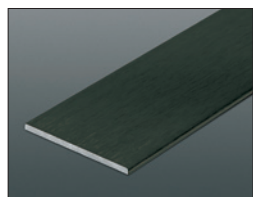
AKGB Brushed copper/bronze
anodized aluminum



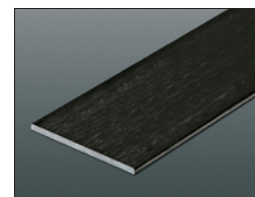
AMGB Brushed brass
anodized aluminum



ABGB Brushed antique bronze
anodized aluminum

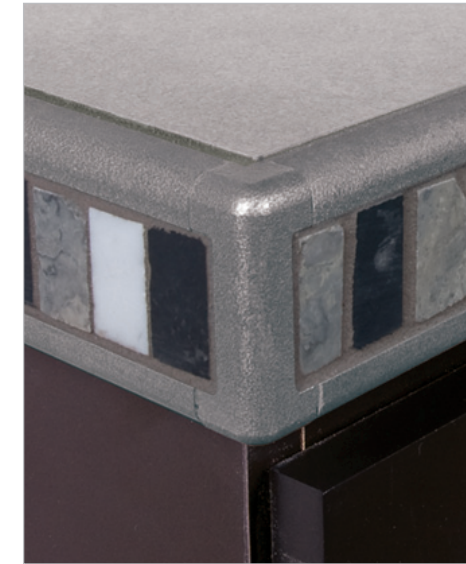


AGRB Brushed graphite
anodized aluminum



AGSB Brushed black
anodized aluminum

*Choose the perfect finish to match fixtures,
blend with tiles, or accent your design.*

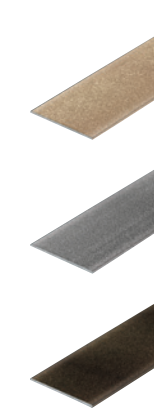


Tuscan Inspirations

Finishes inspired by nature



*Tuscan Inspirations offer the perfect complement to ceramic and stone tile,
with warm, soothing earth tones, and unique textures inspired by nature.*



< Tuscan Beige

Blends with neutral tile to create a subtle finish.

< Tuscan Pewter

Ideal for use as an accent in both modern and rustic designs.

< Tuscan Bronze

The perfect complement to oil-rubbed bronze fixtures.

COLOR-COATED ALUMINUM



BW
Bright white



W
White



SP
Sand pebble



BH
Bahama



HB
Light beige



NB
Nut brown



RB
Red brown



SB
Black brown



GS
Black



HG
Light grey



PG
Classic grey



G
Grey



Schluter Systems L.P. • 194 Pleasant Ridge Road, Plattsburgh, NY • 12901-5841 • Tel.: 800-472-4588 • Fax: 800-477-9783
Schluter Systems (Canada) Inc. • 21100 chemin Ste-Marie, Ste-Anne-de-Bellevue, QC H9X 3Y8 • Tel.: 800-667-8746 • Fax: 877-667-2410
info@schluter.com

www.schluter.com